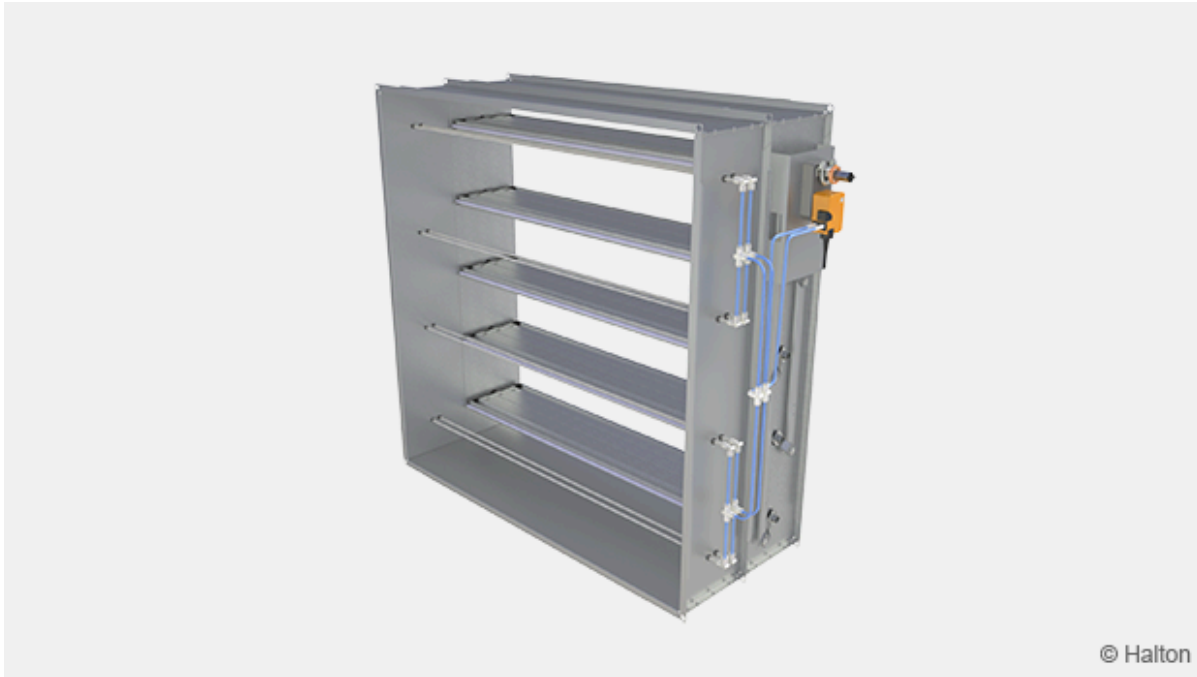


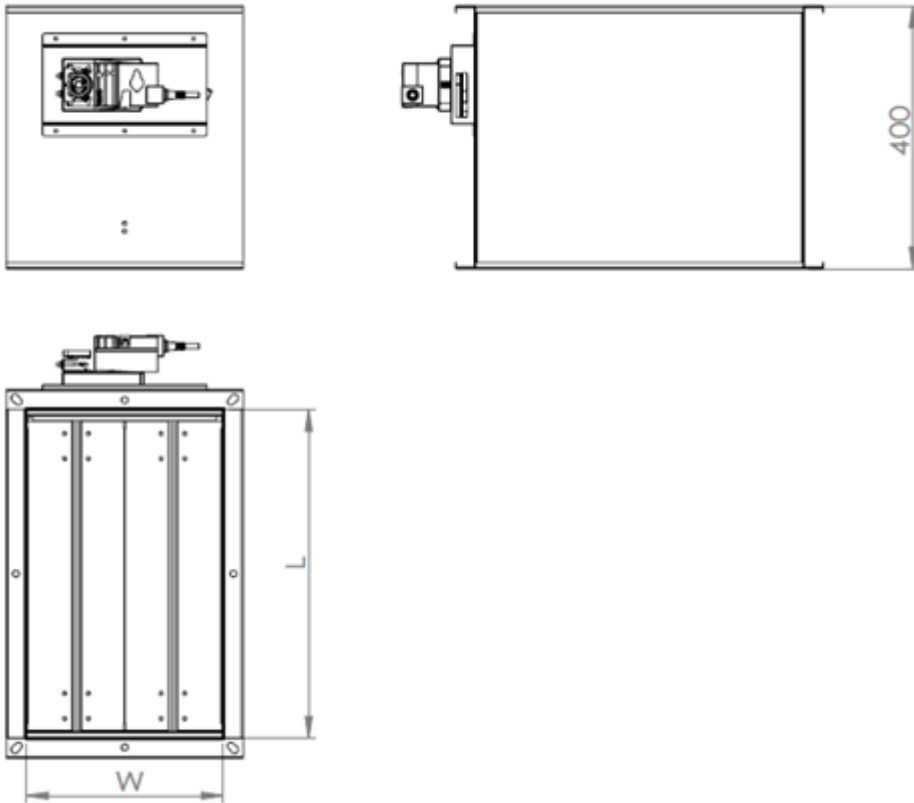
# Halton UKV-C-方形变风量阀



## 概览 Overview

- 变风量阀通过选择不同的应用模式，实现风量或者压力控制。  
With different running modes, UKV can achieve airflow volume or pressure control.
- 运行时与风管压力无关，系统闭环控制。出厂前已标定参数  
Duct pressure-independent running, system with close-cycle control, factory-calibration before delivery.
- 阀体密封等级符合EN1751 B级要求  
Casing tightness fulfils EN 1751, class B requirements
- 材质：镀锌钢板/可选择表面喷涂  
Material: Galvanized Steel /can choose surface painting
- 适用于较大的风速范围：1m/s-11m/s, 通常推荐2m/s-8m/s的最佳运行区域  
Suitable for large air-speed scope:1m/s-11m/s, recommend optimum scope is 2m/s-8m/s.
- 可选附件:压力控制模式/流量控制模式/Modbus通讯模块  
Optional accessories: pressure control mode/airflow control mode/Modbus communication

# 尺寸Dimensions



W= 宽度，风管连接尺寸 Width, diameter of duct connection

100, 150, 200...1000, 1100, 1200 尺寸可定制 size can be customized

L=长度，风管连接尺寸 Length, diameter of duct connection

100, 150, 200...1000, 1100, 1200 尺寸可定制 size can be customized

# 安装Installation

## 产品安装 Product Installation

使用螺栓与风管连接，确保有足够的直风管段用于稳定气流，提高测量精度。推荐大于3倍等效直径,不小于0.5米。

Connection to duct with screw, ensure enough straight duct to stabilize airflow for measurement accuracy.

Recommend  $>3D$  (diameter or equivalent diameter, no less than 0.5m)

## 接线wiring

接线可以参照不同运行模式下对应的控制器手册。

Wiring can refer to concerned running modes controller manual