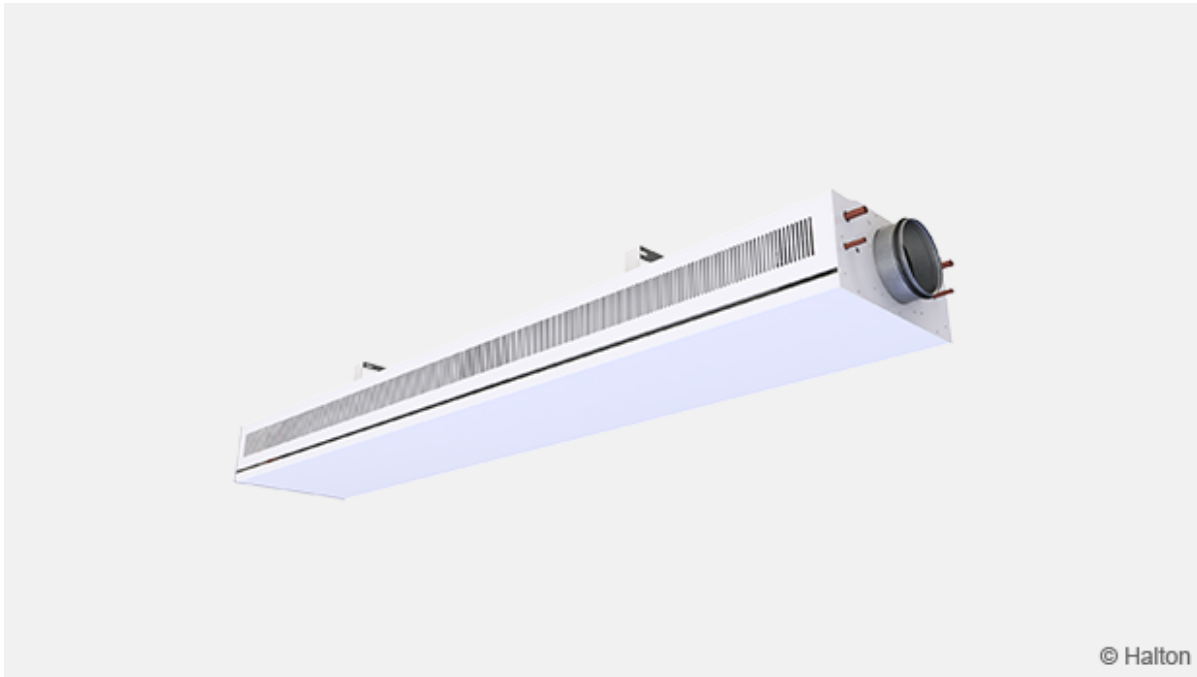


Halton Rex REO – Variable air volume chilled beam (VAV)



Overview

Halton Rex REO chilled beam is:

- Suitable for demand based Halton Workplace control systems
- Combined cooling, heating, and supply air unit for exposed installation
- Well suited for demand based ventilation with constant static pressure ductwork
- Ideal solution for applications where high-quality indoor conditions, energy efficient operation and individual room control are appreciated

Typical applications: office rooms, landscape offices and meeting rooms.

Halton Rex REO chilled beam is designed for high quality office requirements with high flexibility of the airflow adjustability. The operation of this chilled beam will adapt to changes in the use of the space and office layout changes.

- Adjustable supply airflow rate changes with Operation Mode Damper (OMD).
- Individually adjustable velocity conditions with Halton Velocity Control (HVC).
- In-built flexibility for partition wall relocations with Halton Velocity Control.
- Demand based ventilation for efficient use of energy in constant-pressure ductwork zone applications.
- Enhanced life cycle performance with optimised air and water flow rates

Product models and accessories

- Model with combined cooling and heating coil
- Duct cover, integrated control valves and actuators as accessories
- Model with Halton Workplace WRA room automation system package

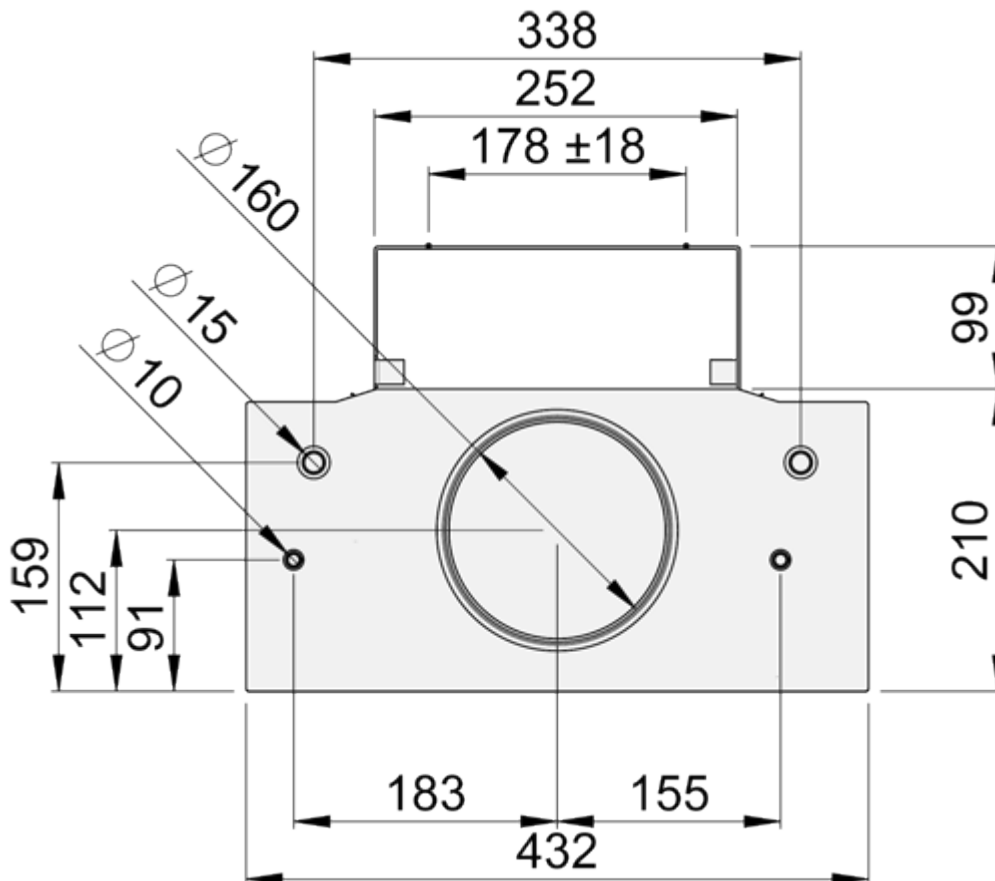
Halton chilled beams are certified by Eurovent Certita.

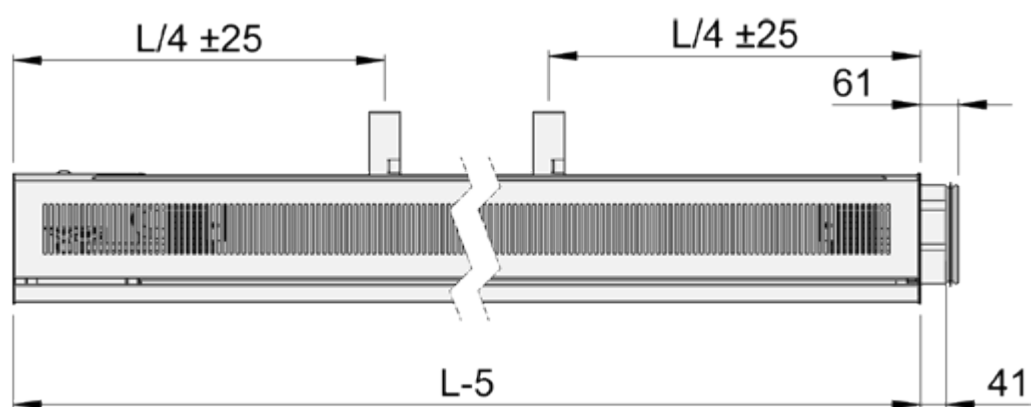
[Link to Certificate](#)



Dimensions

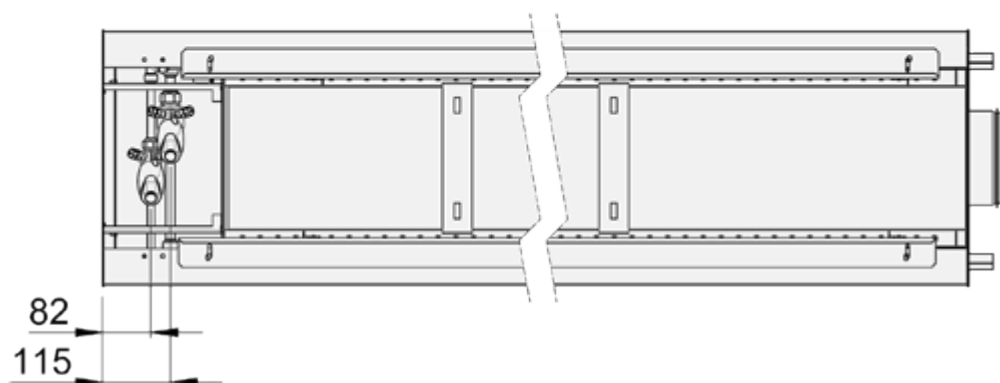
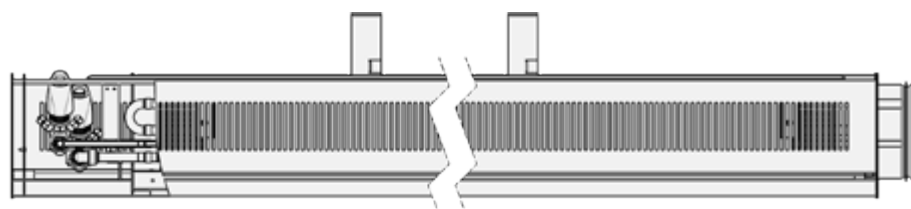
Connection types, air and water





Length, L [mm]	1800, +100, ..., 3600
Coil length [mm]	1500, +100, ..., 3300

Valves



Material

Part	Material	Finishing	Note
Front panel	Pre-painted galvanised steel	Polyester-painted, white (RAL 9003 or RAL 9010, 20% gloss)	Special colours available Polyester-epoxy-painted
Coil covers	Pre-painted galvanised steel	Polyester-painted, white (RAL 9003 or RAL 9010, 20% gloss)	Special colours available Polyester-epoxy-painted
End plates	Galvanised steel	Polyester-painted, white (RAL 9003 or RAL 9010, 20% gloss)	Special colours available Polyester-epoxy-painted
Supply air plenum	Galvanised steel	–	–
Brackets	Galvanised steel	Polyester-epoxy-painted, white (RAL 9003)	Special colours available
Coil pipes	Copper	–	–
Coil fins	Aluminium	–	–

Cooling/heating water pipe connections are Cu15/Cu10 with wall thickness of 0.9-1.0 mm fulfilling the requirements of European Standard EN 1057:1996.

The maximum operating pressure for chilled/hot water pipework is 1.0 MPa @ 70 °C.

Accessories

Accessory	Code	Description	Note
Combined cooling and heating coil	TC = H	Coil with hot water circulation	Cooling/heating. copper water pipe connections are Ø 15/10 mm
Cooling coil with air bleeder	TC = CV	Coil with chilled water circulation	Cooling copper water pipe connection is Ø 15mm
Combined cooling and heating coil with air bleeders	TC = HV	Coil with hot and chilled water circulation	Cooling/heating, copper water pipe connections are Ø 15/10 mm
Visual appearance	VA=See section Order code	For appearance options see Fig. 1-6	Selected options have the same performance data and dimensions.

Visual appearance options (VA)

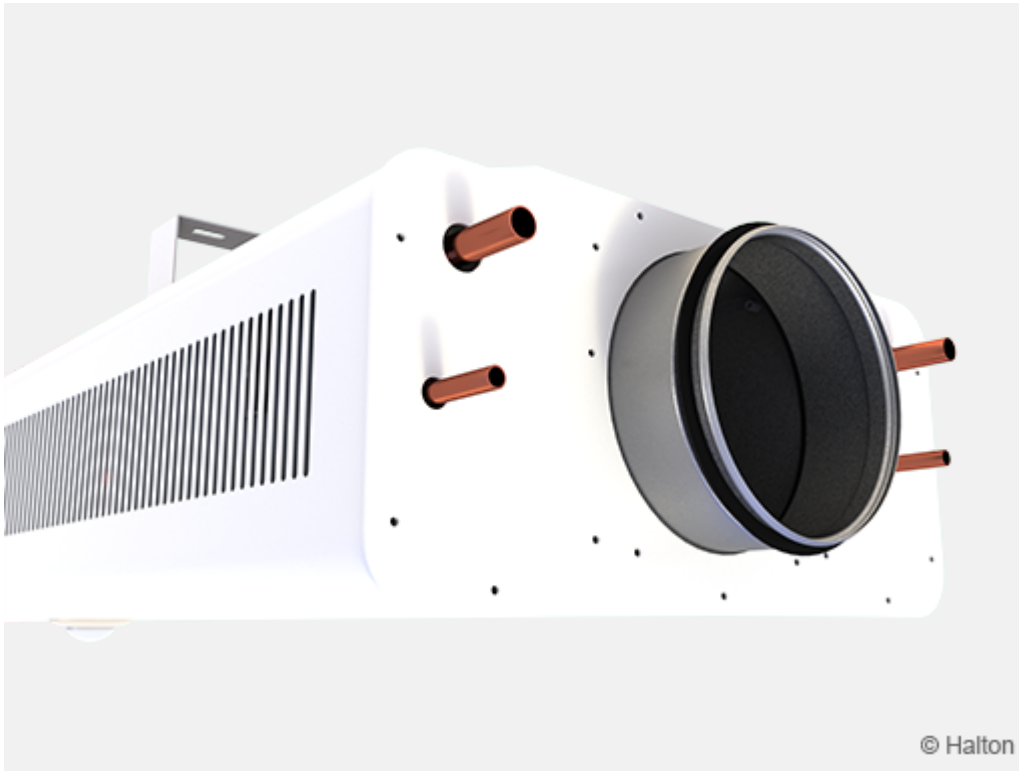


Fig.1. *Rounded, oval perforation (RO)*

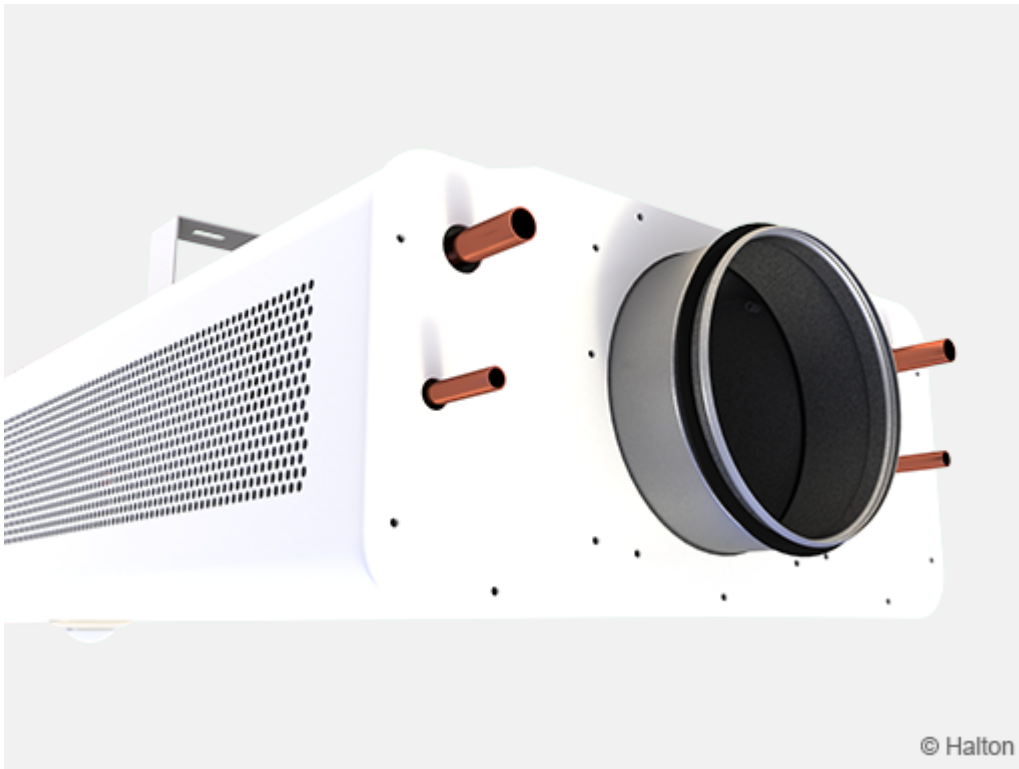


Fig.2. *Rounded, round perforation (RR)*

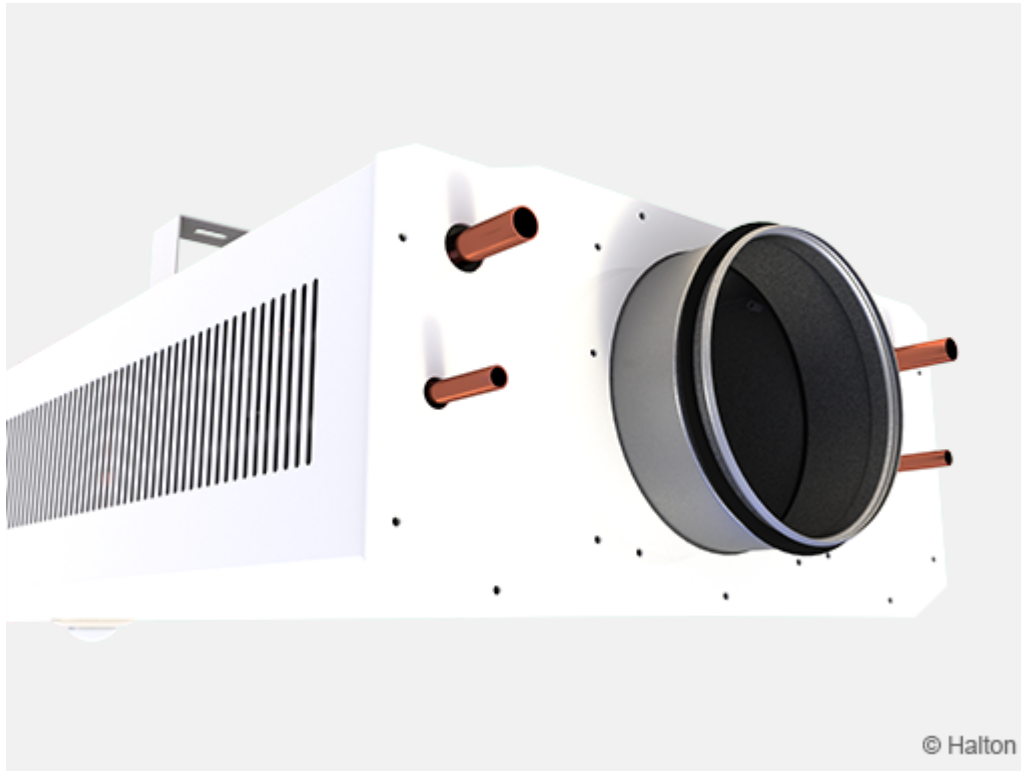


Fig.3. Angular, oval perforation (AO)

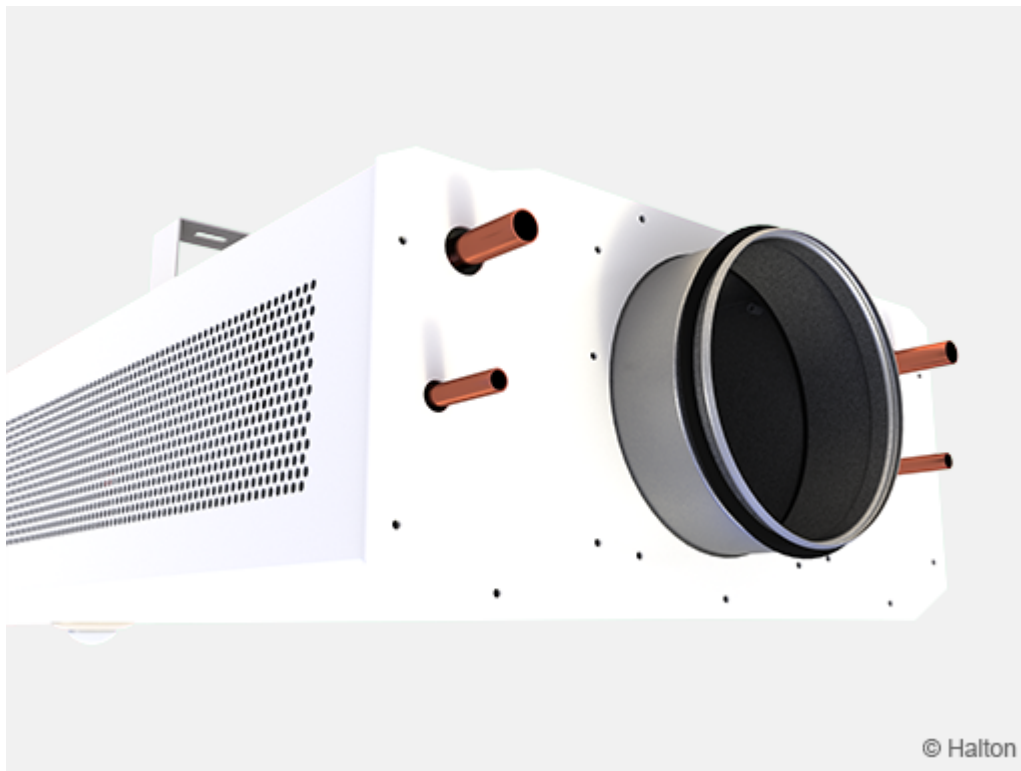


Fig.4. Angular, round perforation (AR)

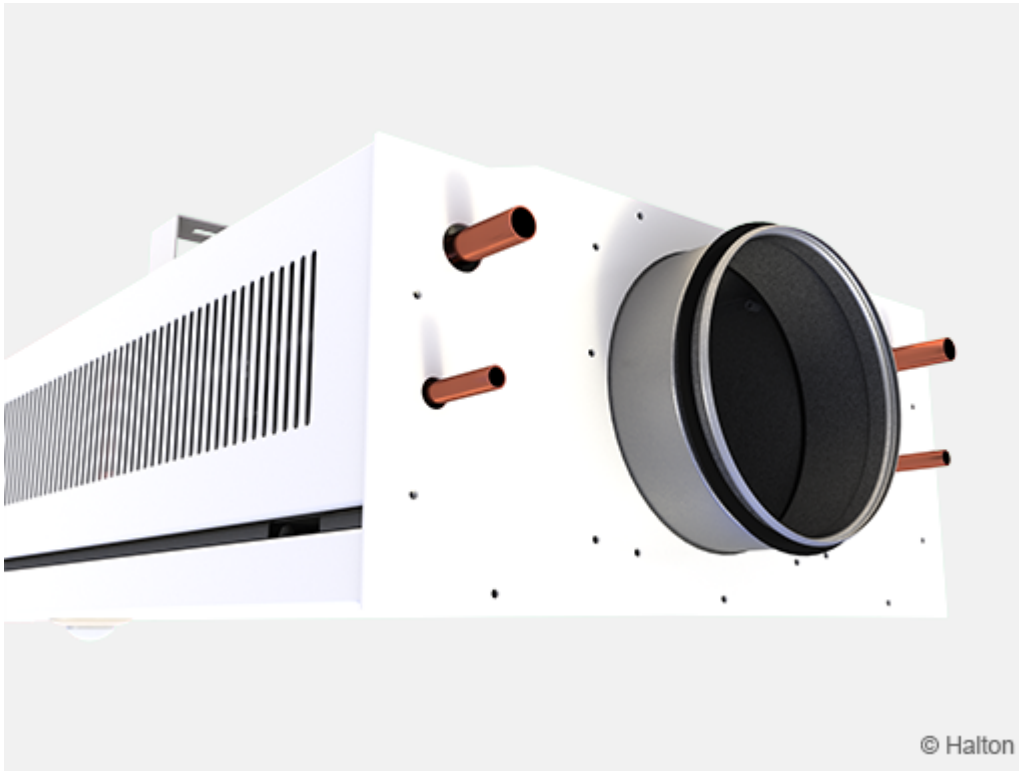


Fig.5. Square with fixed front panel, oval perforation (SO)

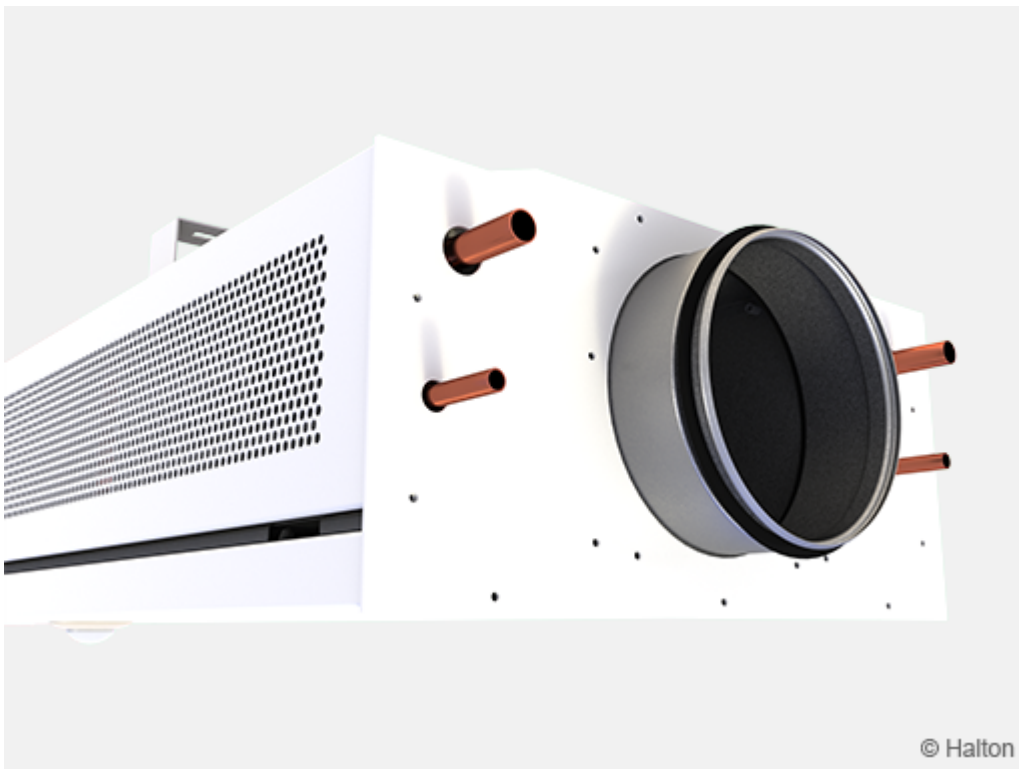


Fig.6. Square with fixed front panel, round perforation (SR)

Operating principle

The Halton Rex REO chilled beam is an active chilled beam for exposed installation.

The primary supply air enters the plenum of the active chilled beam, from which it is diffused into the room through nozzles controlled by Operation Mode Damper (OMD). The supply air nozzle jets efficiently induce ambient room air through the heat exchanger, where it is either cooled or heated. The supply air jet is directed horizontally along the ceiling surface. The recommended minimum distance is 600 mm from the wall and 100 mm from the ceiling.

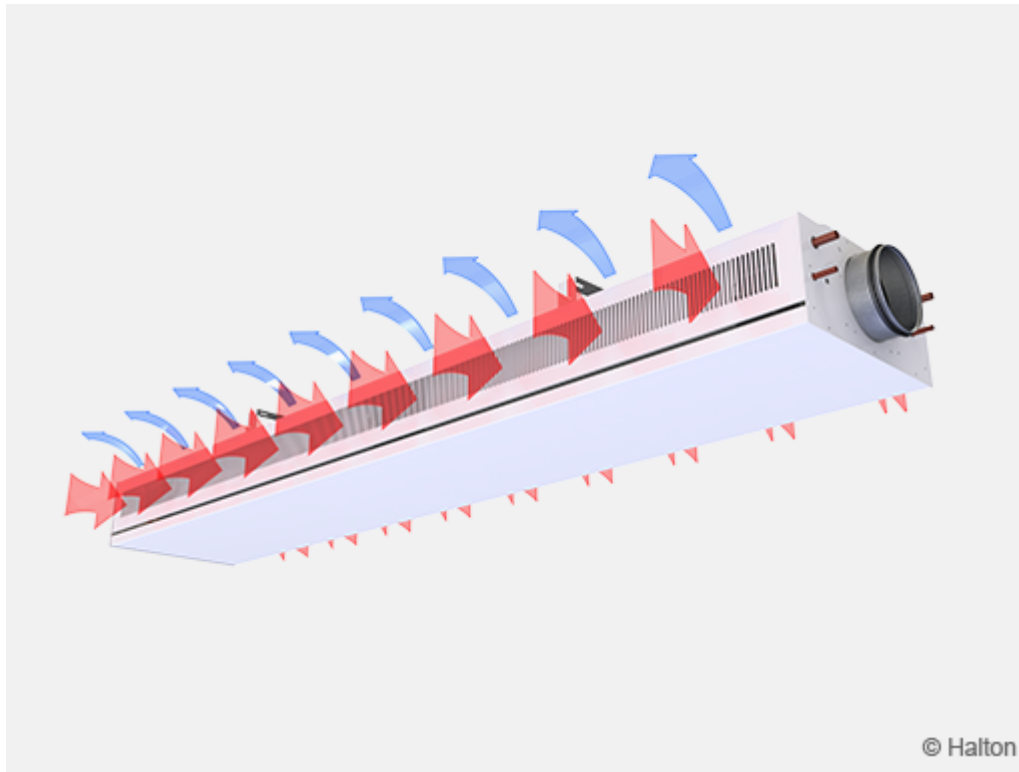


Fig.1. Function of the Halton Rex REO chilled beam

Velocity control in the occupied zone

Halton Velocity Control (HVC) is used for adjusting room air velocity conditions either when room layout is changed (e.g., in cases where the chilled beam is located near the partition wall) or when local, individual velocity conditions need to be altered. Halton velocity control adjustment has an impact on the induced room airflow through the heat exchanger, and therefore it either increases or decreases both the velocities in the occupied zone and the cooling/heating capacity of the chilled beam.

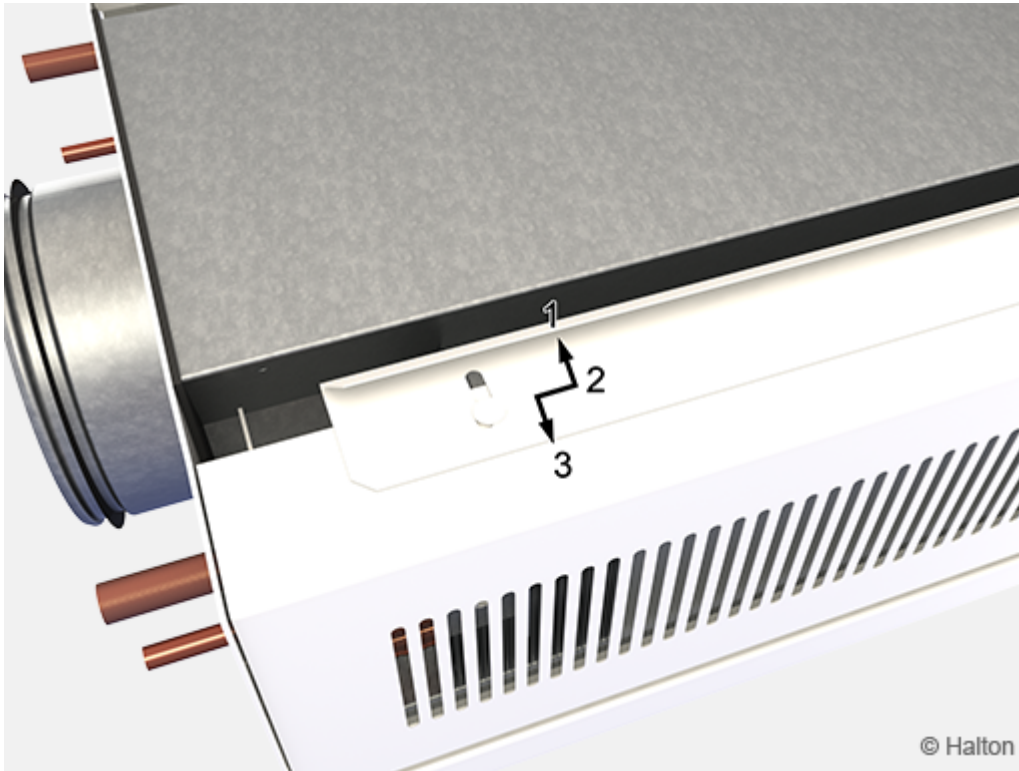
Halton Velocity Control involves manual velocity adjustment with three different positions (Fig.1. and 2.): 1 = Throttle, 2 = Normal, and 3 = Boost. The Halton velocity control system is divided into sections to enable the adjustment of conditions in different parts of the occupied zone. Depending on the length of the beam, optimal HVC damper module lengths between 500 and 1400 mm are used.

It is recommended to design the chilled beam in the normal position to allow both throttle and boost functions during the building's life cycle



Pos. 1 = Throttle position Pos. 2 = Normal position Pos. 3 = Boost position

Fig.2. Halton Velocity Control (HVC) from side



Pos. 1 = Throttle position / Pos. 2 = Normal position / Pos. 3 = Boost position

Fig.3. Halton Velocity Control (HVC) from top

Operation mode control

The supply airflow of the chilled beam nozzle jets is dependent on the nozzle type, nozzle row length and static chamber pressure.

The Operation Mode Damper (OMD, green in Fig. 4.) is used for adjusting and controlling the fresh airflow rate in a room space. The airflow rate is dependent on the opening position of the control damper. Operation mode of the room space is monitored with occupancy sensor.

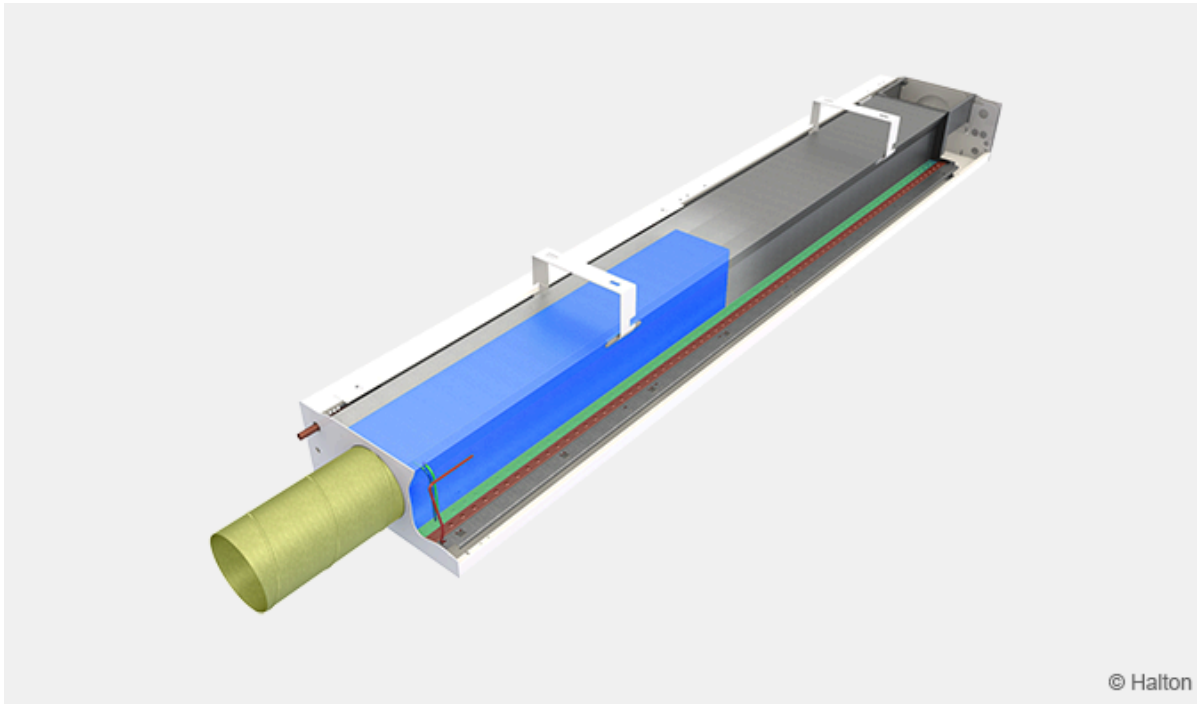


Fig.4. OMD (blue), Chamber 1 (green) , Chamber 2 (red)

Fig.5. presents the function in different modes controlled by the OMD. In unoccupied mode (1.) the supply airflow rate is set to minimum value that can remove material emission. In occupied mode (2.) supply airflow rate is set to normal office mode. When more persons are coming to the space, based on CO₂-sensor airflow is increased to boost mode (3.) to maintain the set target value of the indoor air quality.



1. Unoccupied mode

2. Occupied mode

3. Boost mode

Fig.5. Supply air modes of the Halton Rex Exposed VAV beam

It is recommended that chilled beams for demand based airflows should be connected to constant pressure ductwork zone.

Temperature controls

The cooling and heating capacities of the chilled beam are controlled by regulating the water flow rate according to the control signal of the room temperature controller.

In heating mode, it is recommended that the temperature difference between the jet outlet and room air would not be greater than 3 °C. The inlet water temperature of the heat exchanger should not be higher than 35 °C. Optimal heating performance requires an appropriate primary airflow rate. Thus, the air handling unit shall be in operation during heating periods to ensure proper heating performance.

System package

Halton Workplace WRA room automation system package for Halton Rex REO chilled beam

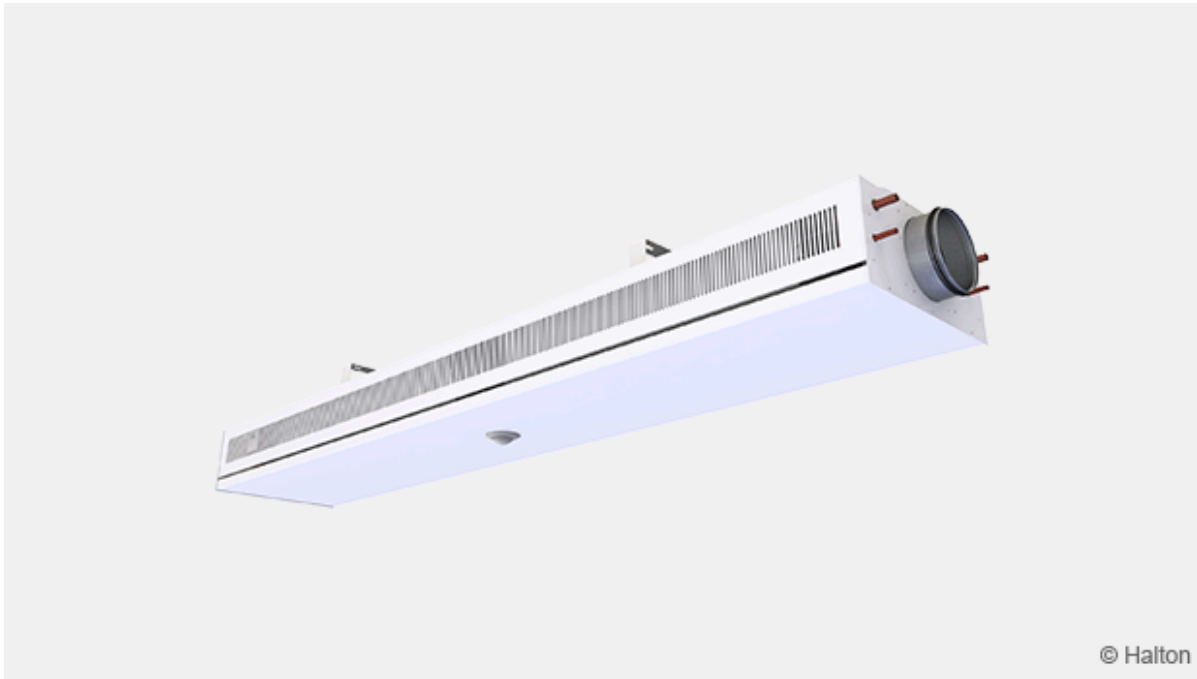


Fig. 1: Halton Workplace WRA room automation controller integrated to Halton Rex 600 (RE6) chilled beam

Halton Workplace WRA is a controller especially designed for controlling the automation system of office spaces and meeting rooms. It is used for controlling the ventilation airflow, room temperature, and indoor air quality.

The Halton Workplace WRA room automation package consists of a controller unit and optional components depending on customer needs: a wall panel and sensors for temperature, CO₂, occupancy, pressure, and condensation.

There are options available for the controller unit and wall panel, depending on the number of controls and sensors required. The Halton Workplace WRA room automation controller is always combined with other Halton products for adaptable and high-level indoor climate.

Application area

- Controlling the ventilation airflow, room temperature, and indoor air quality in office spaces and meeting rooms
- The Halton Workplace WRA room automation controller is an important part of the Halton Workplace system, controlling room units and airflow control dampers
- Overall Halton Workplace System includes:
 - Room air conditioning applications with Halton Workplace WRA room automation

controller:

- Active chilled beams
- Exhaust units
- VAV dampers
- Active VAV diffusers
- Halton Max MDC zone control dampers
- Halton Workplace WSO system optimiser

Key features

- Factory-tested controller and wiring, easy to install
- Pre-installed project-specific parameters, quick to commission
- Several operating modes based on occupancy, thermal comfort, and indoor air quality
- Enables fully flexible layout solutions for changing needs in office environments
- Highly energy-efficient and reliable system operation

Operating principle

The Halton Workplace WRA room automation controller operates with Variable Air Volume (VAV) dampers and active chilled beams of the Halton Workplace system. These are used for adjusting the ventilation airflow, room temperature, and indoor air quality in office spaces.

Each room unit in an office space can have its own dedicated Halton Workplace WRA room automation controller, or a single controller can control multiple room units. The Halton Workplace WRA room automation controller can automatically adjust the system according to the indoor environment level preferred by users. Each room unit having its own dedicated controller brings maximum flexibility.

Room automation: Halton Rex REO active chilled beams controlled with Halton Workplace WRA room automation controllers

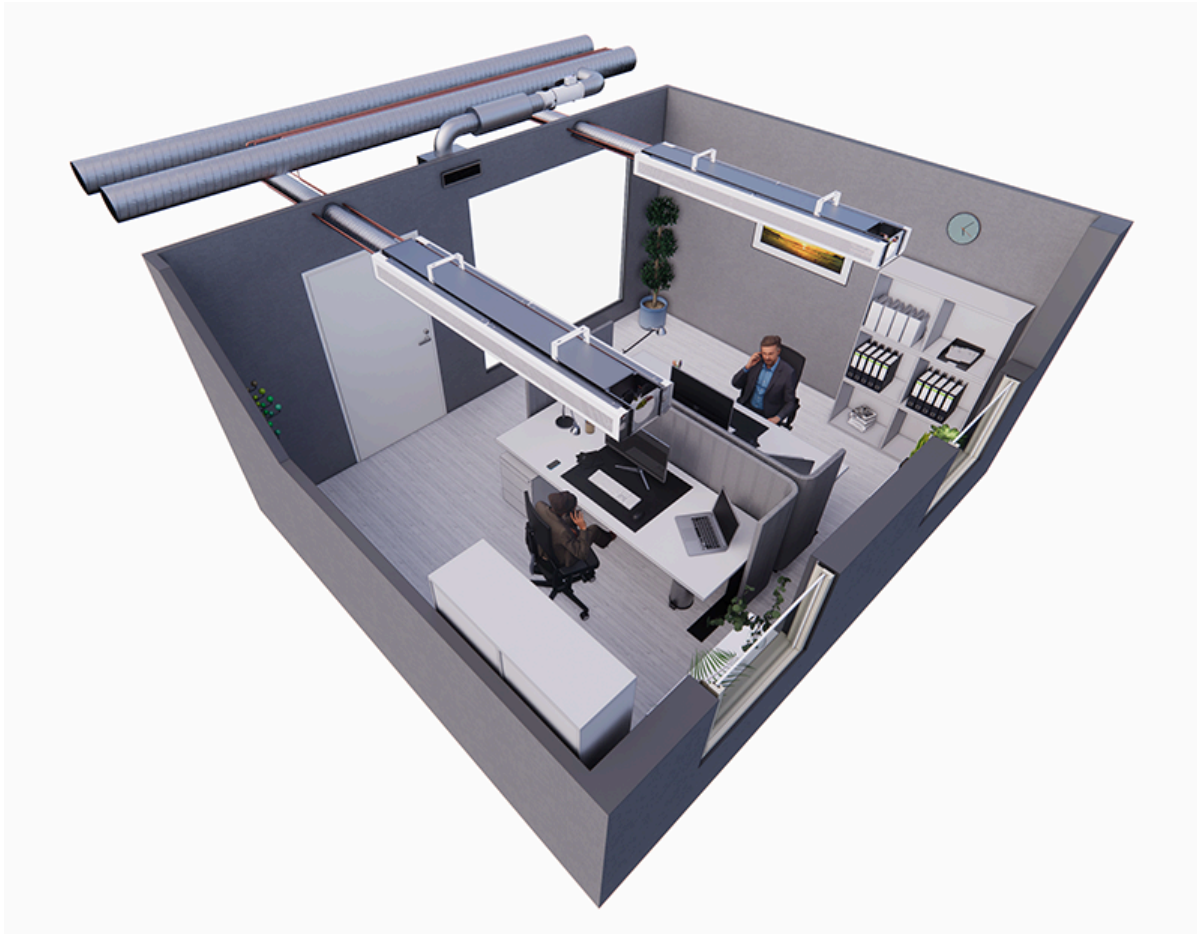


Fig. 2: Halton Rex Exposed VAV (REO) chilled beams controlled with Halton Workplace WRA room automation controllers in a double office room

Room automation description

In this configuration, two Halton Workplace WRA room automation controllers (DXR2.E12P-102A) control two Halton Rex REO active chilled beams. Each Halton Rex REO chilled beam has heating and cooling valves, a motorised Operation Mode Damper (OMD) control, and integrated CO₂ and condensation sensors. A pressure sensor is integrated into the Halton Workplace WRA room automation controller. The system also includes an exhaust VAV damper and a wall panel (QMX3.P37) with temperature sensor and display. One Halton Workplace WRA room automation controller can individually control up to four terminal units, and there can be several Halton Workplace WRA room automation controllers in the room.

Design criteria for room automation

- Halton Rex REO chilled beam has heating and cooling valves
- Halton Rex REO chilled beam has motorised OMD control
- Condensation sensor and CO₂ sensor integrated into REO chilled beam

Equipment list

Code	Equipment
RC	Controller unit
FG	Airflow damper actuator
FC	Airflow measurement
H	Water valve actuator
CS	Condensation sensor
OS	Occupancy sensor
PE	Pressure sensor
CO ₂	CO ₂ sensor
WP	Wall panel
TE	Temperature sensor
TI	Temperature display

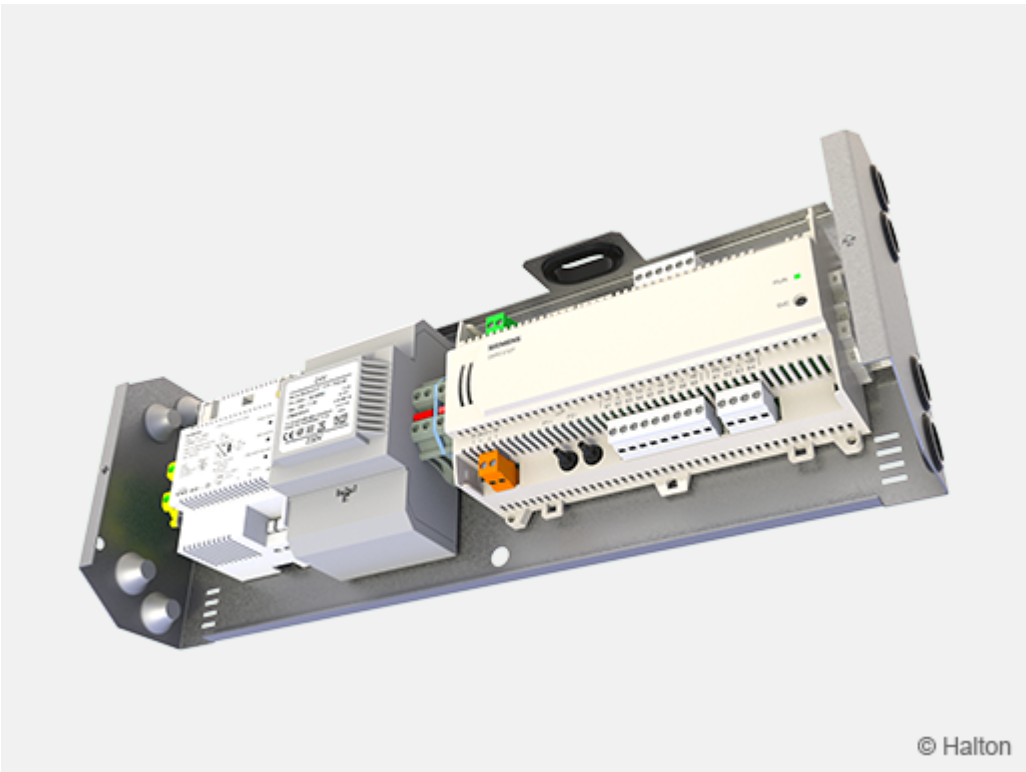
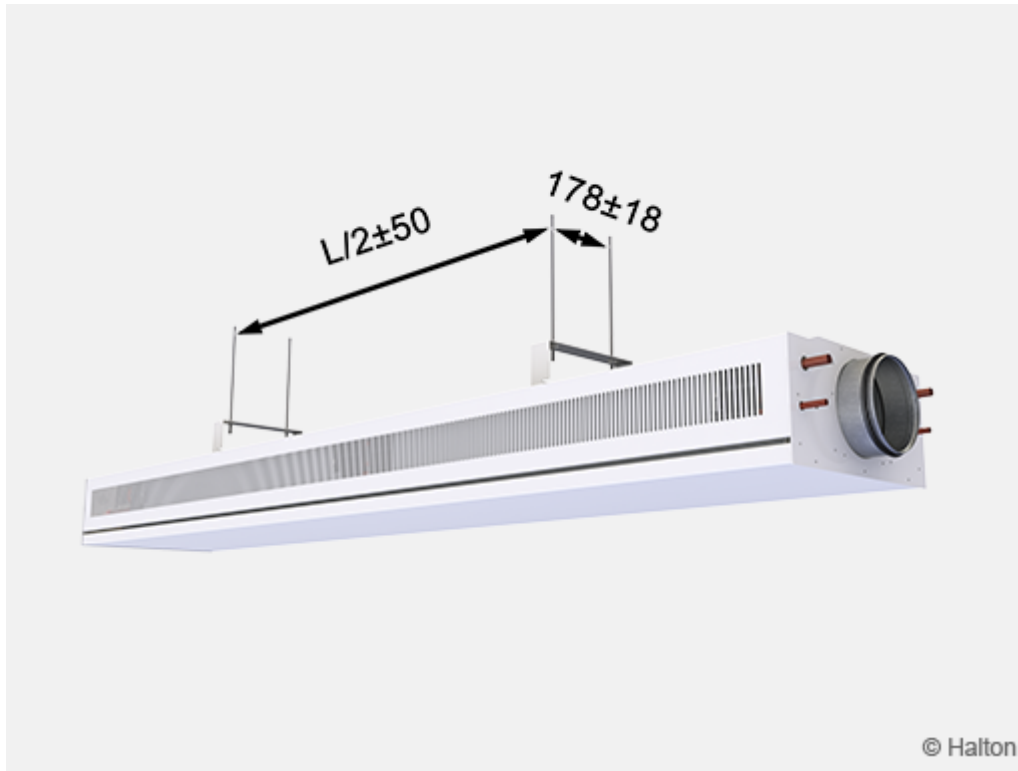


Fig. 11: Factory-installed Halton Workplace WRA room automation controller DXR2.E12P-102A

Installation



The Halton Rex Exposed VAV unit is suitable for exposed installation in the ceiling, typically lengthwise in the room. It is recommended to position the beam no closer than 600 mm from the wall and 100 mm from the ceiling. The chilled beam ceiling brackets can be fixed directly to the ceiling surface or suspended using threaded drop rods (8 mm). It is recommended that the brackets are positioned one quarter of a unit length ($L/4$) away from the end of the beam.

Install the main pipelines of the cooling and heating water loops above the level of the chilled beams to enable venting of the pipework.

Installation with brackets

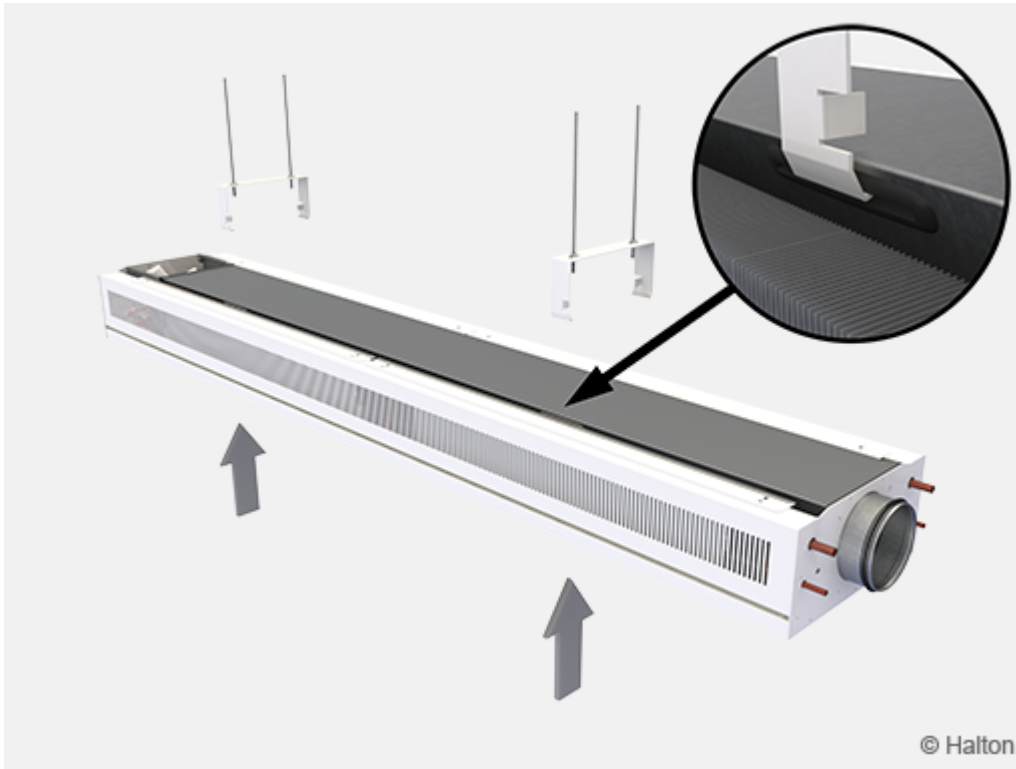


Fig.1. Fixing of the beams done by pushing the beam to the ceiling brackets. Secure all fixing points so that they are properly locked to the fixing slots.

Commissioning

Cooling

The recommended cooling water mass flow rate is 0.02 ... 0.10 kg/s, resulting in a temperature rise of 1 ... 4 °C in the heat exchanger. To avoid condensation, the recommended inlet water temperature of the heat exchanger is 14 ... 16 °C.

Heating

The recommended heating water mass flow rate is 0.01 ... 0.04 kg/s, resulting in a temperature drop of 5 ... 15 °C in the heat exchanger. The maximum recommended temperature of the inlet water for the heat exchanger is 35 ... 45 °C.

Balancing and control of water flow rates

Balance the water flow rates of the Halton Rex REO with adjustment valves installed on back end of the chilled beam. The cooling capacity and heating capacity of the chilled beam are controlled by regulating the water mass flow rate.

When setting the automatically balancing combination valve AB-QM, set the designed water flow rate in the valve body and verify the pressure difference (min. 7.5 kPa) between the measurement

nipples of the valve. The pressure difference over the valve must be 16 kPa, to ensure proper operation.

The water mass flow rate can be controlled by using an ON/OFF valve or a two- or three-way proportional valve.

Adjustment of supply airflow rate

Connect a manometer in the measurement tap and measure the static pressure in the Halton Rex REO chilled beam. The measurement tab locations for OMD and chambers 1 and 2 are presented in Fig.1.

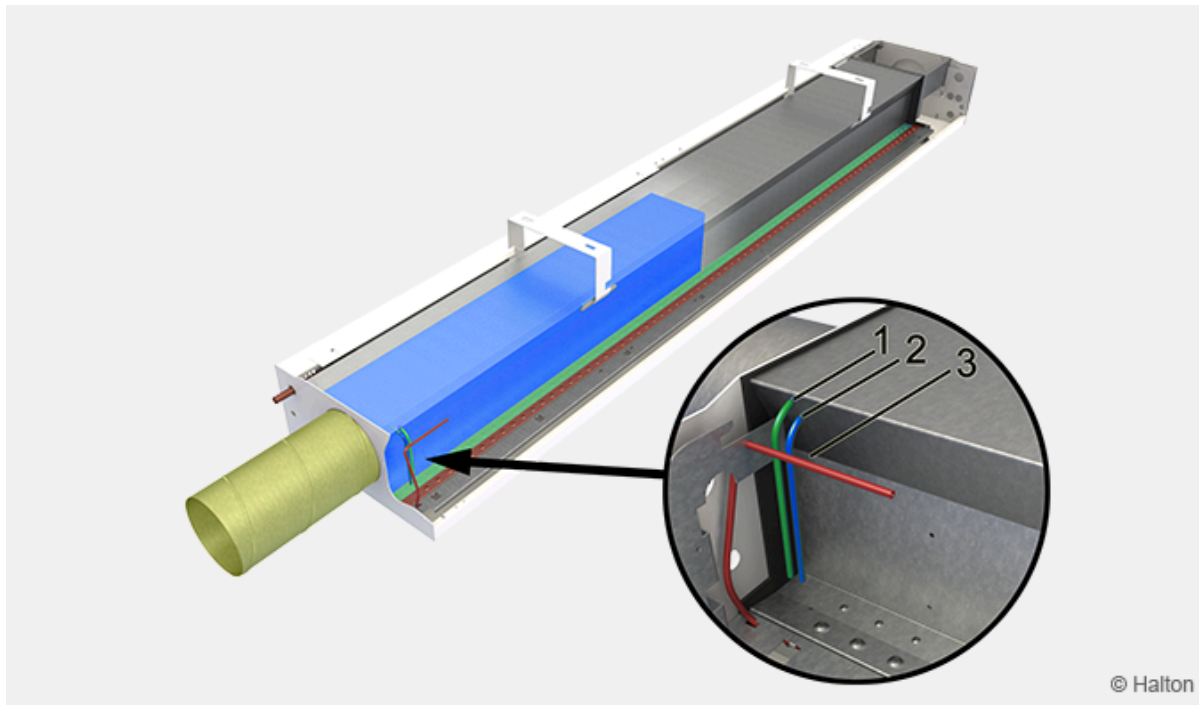


Fig.1. Location of measurement tabs

Key:

- 1. Chamber 1 (green)
- 2. OMD (blue)
- 3. Chamber 2 (red)

The airflow rate is calculated according to the formula below:

Total airflow rate (q_v)

$$q_v = q_{v1} + q_{v2}$$

q_v Total airflow rate, l/s or m³/h

q_{v1} Chamber 1 nozzle jet airflow rate, l/s or m³/h

q_{v2} Chamber 2 nozzle jet airflow rate, l/s or m³/h

Nozzle jet airflow rate for Chamber 1 and 2 (q_{v1} and q_{v2})

$$q_{v1,2} = k * l_{eff} * \sqrt{\Delta p_m}$$

l_{eff} Length of the coil [m]

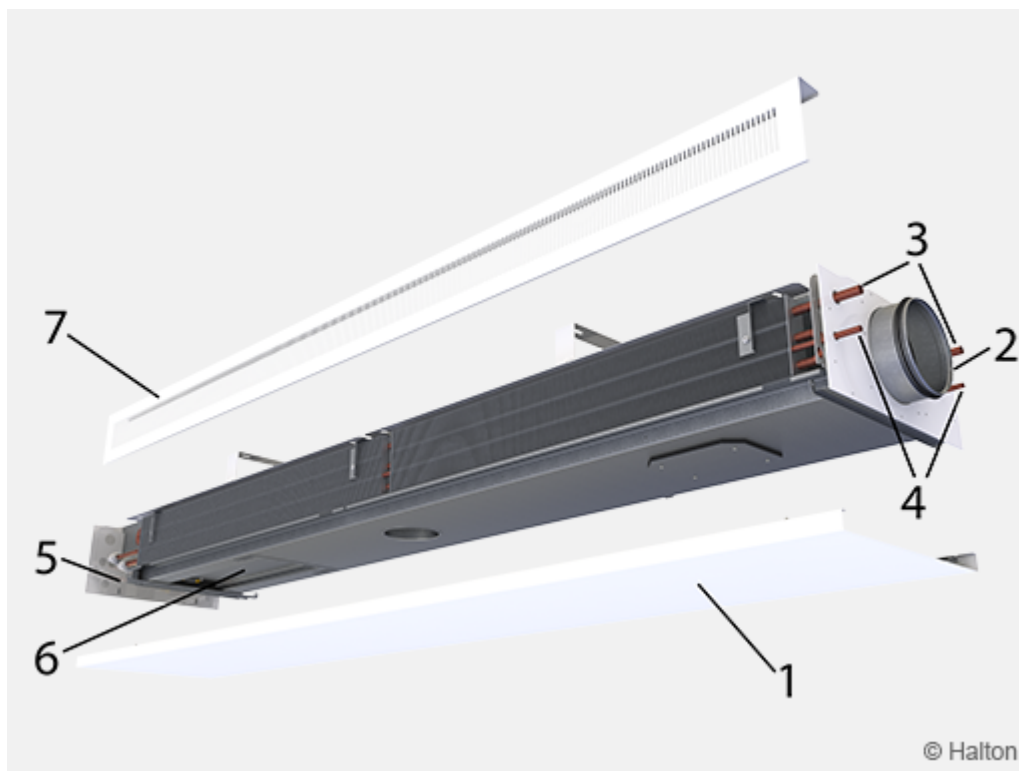
Δp_m Measured static chamber pressure [Pa]

Nozzle	k [l/s]	k [m ³ /h]
A	0.71	2.56
B	1,01	3,64
C	1,41	5,08
D	2.08	7,49

Same k factors will be used to all the operation modes.

Please note the l_{eff} may differ between the normal and boost modes.

Servicing



Key:

1. Front panel
2. Supply air connection
3. Chilled water pipe connection
4. Heating water pipe connection
5. Control valves and actuators

6. Controller
7. Coil cover

Remove the coil covers and front panel of the Halton Rex REO. Clean the supply air plenum, duct and finned coils of the heat exchanger using a vacuum cleaner, taking care not to damage the finned coils. Clean the front panel and, if necessary, the side plates with a damp cloth.

Specification

The unit is an active chilled beam for exposed installation with bi-directional air supply. The front panel is openable and detachable from either side to allow maintenance and cleaning.

The chilled beam is 432 mm wide and 210 mm high, with inlet duct diameter of 160 mm.

The chilled beam can be equipped with a duct cover to cover the connection duct and pipe installations (optional).

The front panel and side panels are made of pre-painted galvanised steel plate (white, RAL 9003). All visible parts can be painted with special colours (RAL xxxx).

The primary airflow rate is adjustable from minimum to maximum (0-100%) when static chamber pressure is kept constant. The chilled beam unit is equipped with a motorised Operation Mode Damper (OMD).

The induced room airflow rate is manually adjustable to three positions without influencing the primary air supply flow rate.

All pipes are manufactured from copper, connection pipes with a wall thickness of 0.9-1.0 mm. The fins of the heat exchanger are manufactured from aluminium. Heating is incorporated within the heat exchanger via two 10 mm pipes connected in series. All joints are factory pressure-tested.

The maximum operating pressure of the pipework is 1.0 MPa @ 70 °C. Each chilled beam is protected by removable plastic coating. Duct connection and pipe ends are sealed for transit. Each chilled beam is identifiable by a serial number printed on a label attached to the chilled beam.

Order code

REO/S-L-P-D, TC-VA-CO-ZT

S = Nozzle type (1st row)

- | | |
|---|-------------|
| A | Extra small |
| B | Small |
| C | Medium |
| D | Large |

L = Beam length [mm]

1800, +100,...,3600

P = Nozzle type (2nd row)

A Extra small

B Small

C Medium

D Large

D = Nozzle length (2nd row)

1200, +100,...,3300

Other options and accessories

SP = System package

N No

Y Yes

TC = Cooling / Heating functions (coil type)

C Cooling

H Cooling and Heating

CV Cooling, with venting valves

HV Cooling and heating, with venting valves

VA = Visual appearance

RO Rounded, oval perforation

RR Rounded, round perforation

AO Angular, oval perforation

AR Angular, round perforation

SO Square with fixed front panel, oval perforation

SR Square with fixed front panel, round perforation

CO = Colour

SW Signal white (RAL 9003)

W Pure white (RAL 9010)

X Special colour (RAL xxxx)

ZT = Tailored product

N No

Y Yes (ETO)

Sub products

System package	Halton Workplace Room Automation WRA
Room exhaust VAV damper	Halton Max MOC
Room exhaust VAV damper	Halton Max MUC

Order code example

REO-A-3000-B-2700, SP=N, TC=C, VA=SO, CO=SW, ZT=N