

Halton Vita VSC – Exhaust unit



Overview

Halton Vita VSC is an exhaust unit with grilles and a vertical duct for all Halton Vita OR Space and Halton Vita OR Zone solutions.

Product characteristics

- Includes two Halton Vita VSG exhaust grilles, a vertical air duct and a duct spigot for horizontal exhaust ductwork connection
- One third (1/3) of the exhaust air flows through the upper grille and 2/3 through the lower grille
- Three different duct connection sizes covering a wide airflow range
- Standard heights at 100 mm intervals (3000-4300mm)
- Stainless steel grilles equipped with stainless steel mesh fluff separators
- Front panel of the grille is easy to remove and clean; can be sterilised in an autoclave

Product models

- Halton VSC/A, exhaust unit with circular duct connection for corner installations
- Halton VSC/B, exhaust unit with rectangular duct connection for wall installations

Options

- Single grille (lower grille) option available

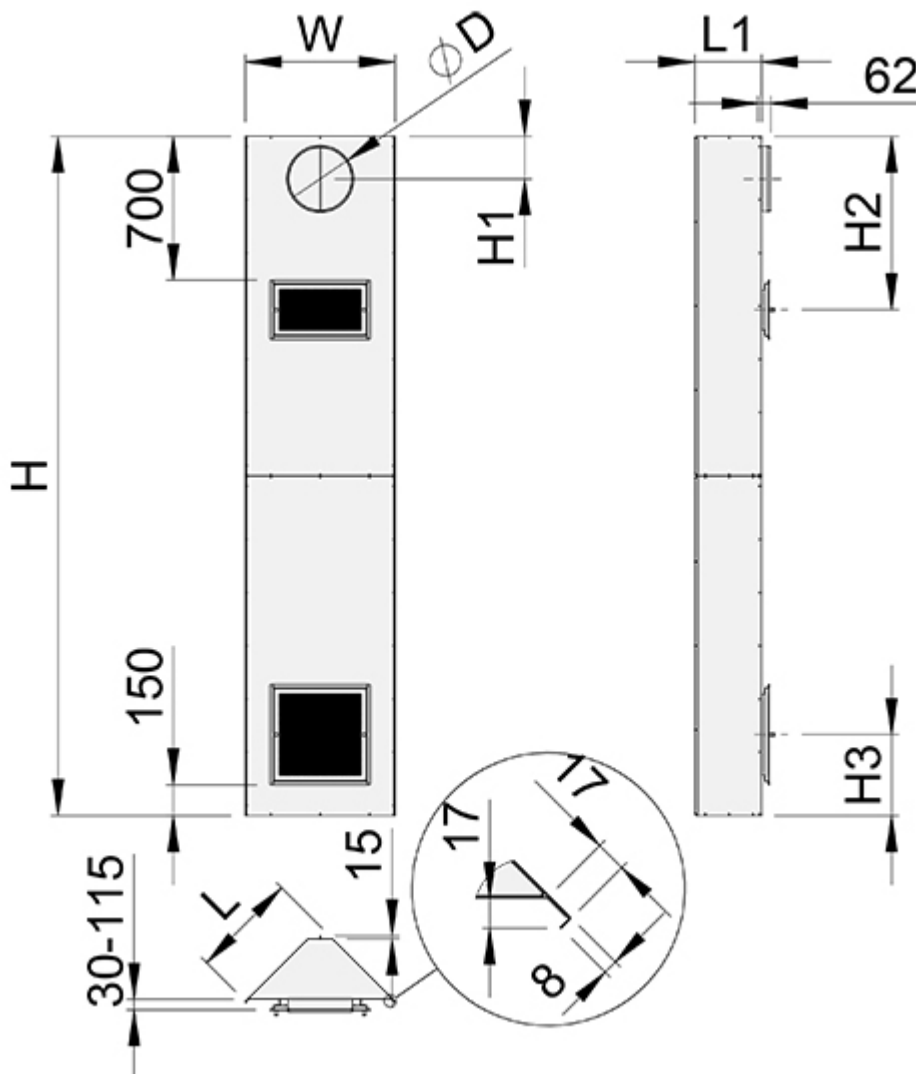
- Special configurations with different airflow distribution ratios
- Available also without the metal mesh fluff separator
- Custom unit heights according to operating room design

Dimensions and weight

The dimensions for the different exhaust unit options are detailed in the following figures and tables. The standard models have an upper and lower exhaust grille, while the option with the lower grille only is also available.

Halton Vita VSC/A

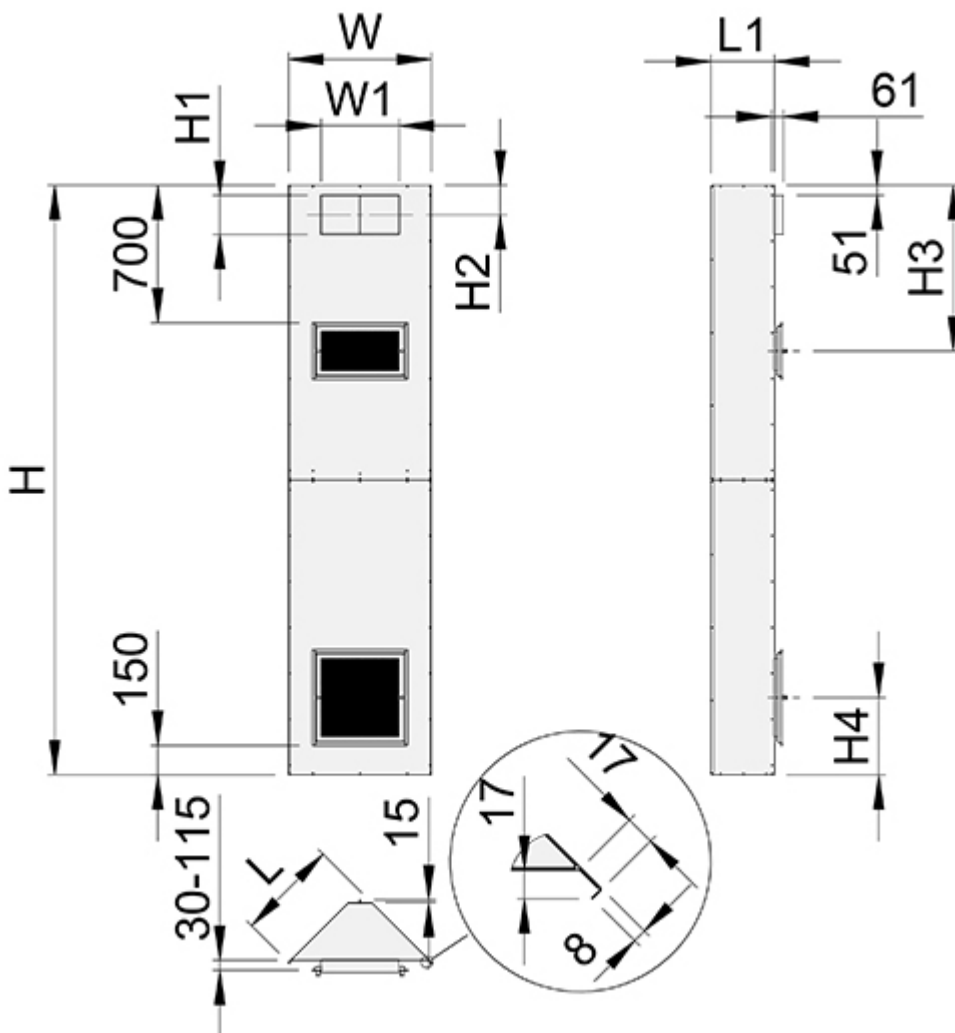
with circular duct connection for corner installations [mm]



D	H	H1	H2	H3	L	L1	W	Lower grille	Upper grille
315	3000,3100 ...4300	208	844	394	515	325	727	400×400	400×200
400	3000,3100 ...4300	250	869	444	615	395	868	500×500	500×250
500	3000,3100 ...4300	300	869	494	715	466	1010	600×600	600×250

D	H	Weight [kg]
315	3000	49
400	3000	59
500	3000	69

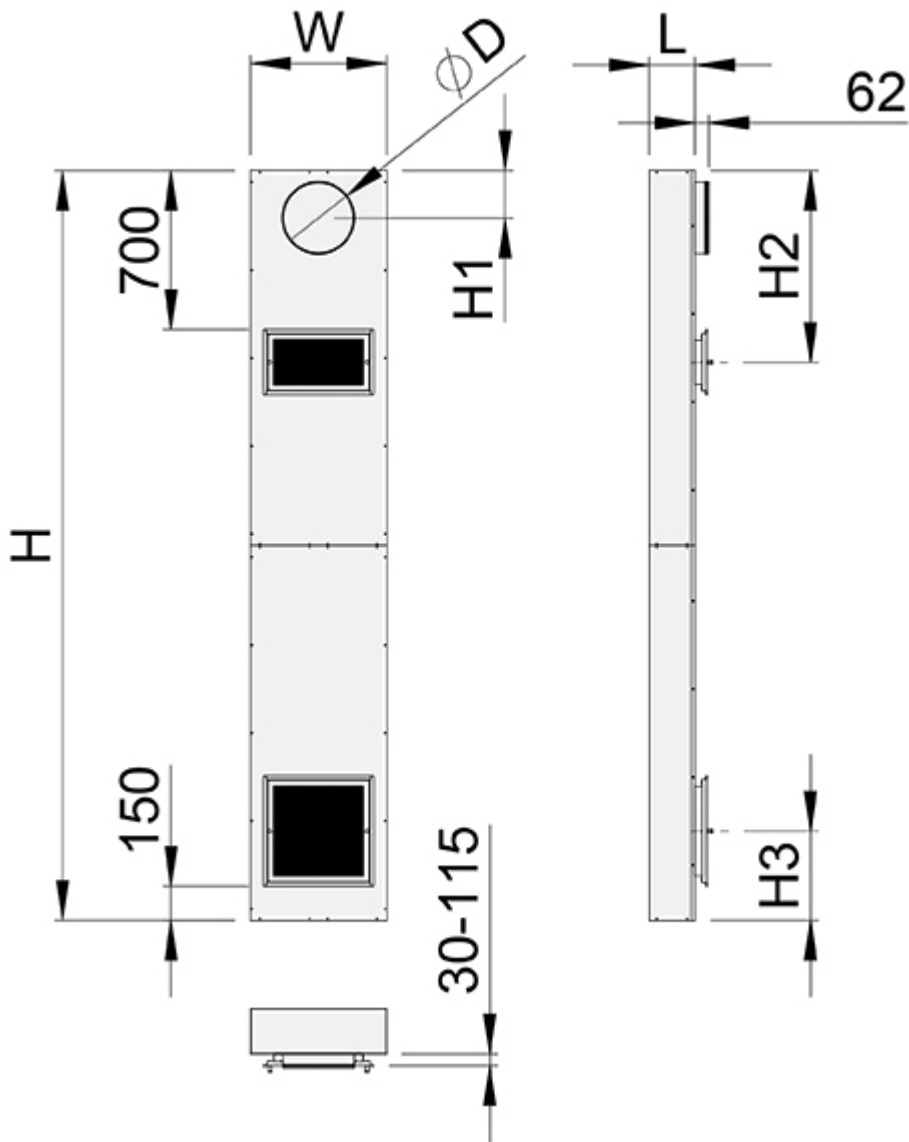
Halton Vita VSC/A with rectangular duct connection for corner installations [mm]



W1xH1	H	H2	H3	H4	L	L1	W	Lower grille	Upper grille
400x200	3000,3100 ...4300	150	844	394	515	325	727	400x400	400x200
500x250	3000,3100 ...4300	175	869	444	615	395	868	500x500	500x250
600x300	3000,3100 ...4300	200	869	494	715	466	1010	600x600	600x250

W1xH1	H	Weight [kg]
400x200	3000	49
500x250	3000	59
600x300	3000	69

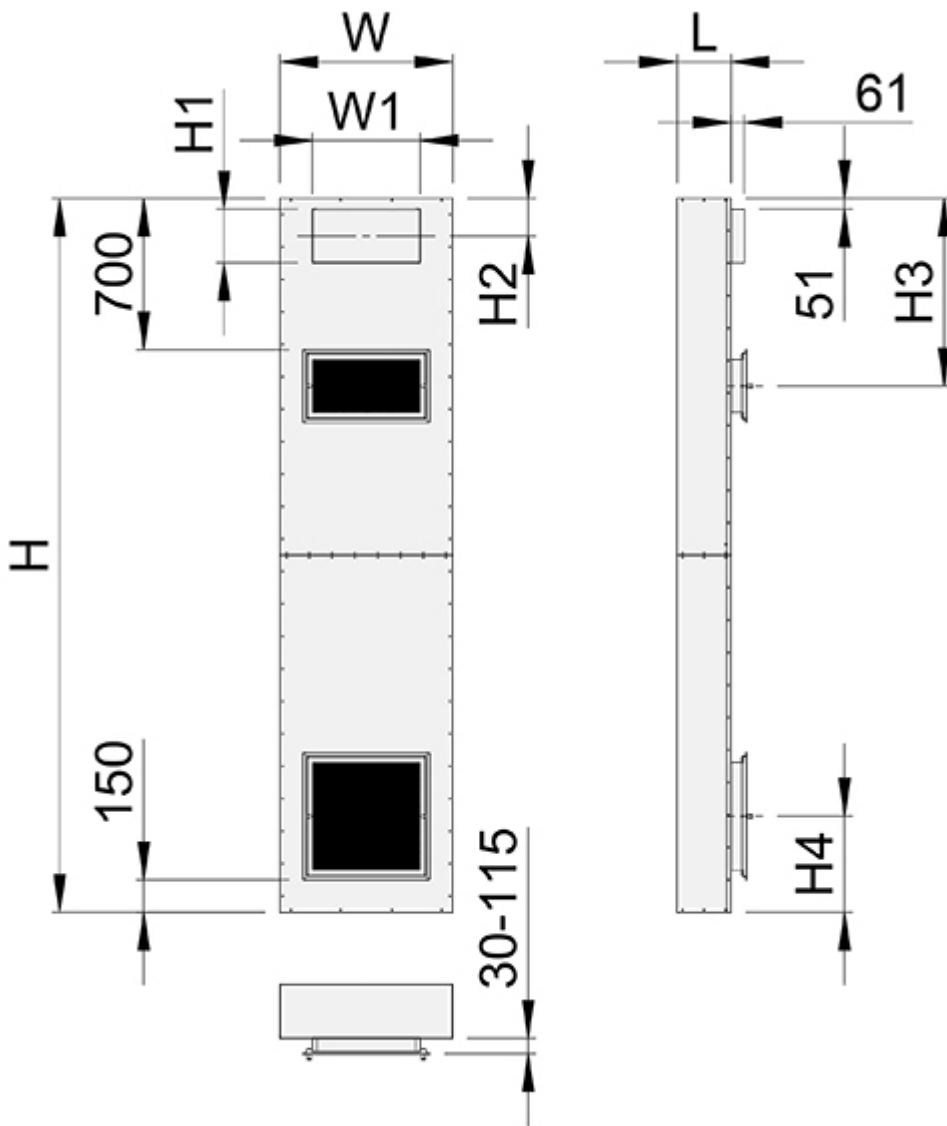
Halton Vita VSC/B with circular duct connection for wall installations [mm]



D	H	H1	H2	H3	L	W	Lower grille	Upper grille
315	3000,3100 ...4300	208	844	394	200	600	400×400	400×200
400	3000,3100 ...4300	250	869	444	250	800	500×500	500×250
500	3000,3100 ...4300	300	869	494	300	800	600×600	600×250

Halton Vita VSC/B

with rectangular duct connection for wall installations [mm]



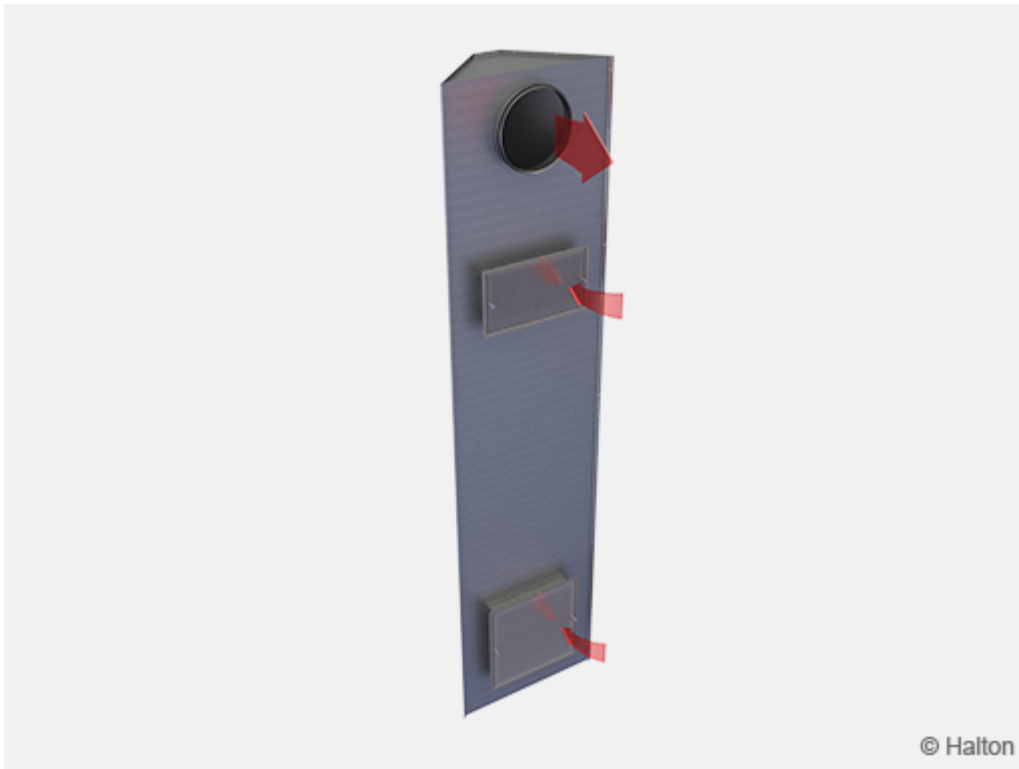
W1xH1	H	H2	H3	H4	L	W	Lower grille	Upper grille
400x200	3000,3100 ...4300	150	844	394	200	600	400x400	400x200
500x250	3000,3100 ...4300	175	869	444	250	800	500x500	500x250
600x300	3000,3100 ...4300	200	869	494	300	800	600x600	600x250

Material

Part	Material
Vertical duct	Galvanised steel
Duct spigot	Galvanised steel, gasket rubber compound
Exhaust grille	Stainless steel (AISI 316)
Fluff separator	Stainless steel (AISI 316)

Function

The exhaust air grilles are dimensioned so that one third (1/3) of the air is exhausted through the upper grille and two thirds (2/3) through the lower grille.



Filters

In the standard model, the exhaust grilles are equipped with stainless steel metal mesh fluff separators. The standard mesh size is 0.2 mm.

There are several exhaust grille options:

- Grilles with or without metal mesh filter
- Two grilles (bottom and top), or one grille (bottom)
- Painted or not painted duct

Note

Although the duct is painted it has to be covered with a wall construction.

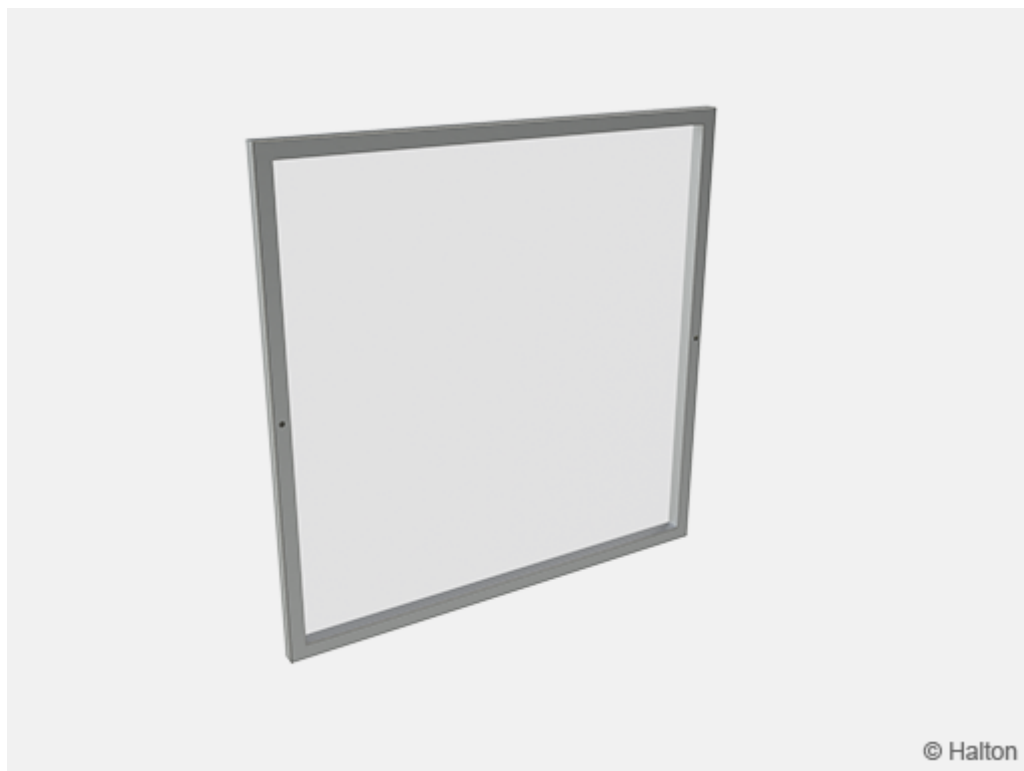
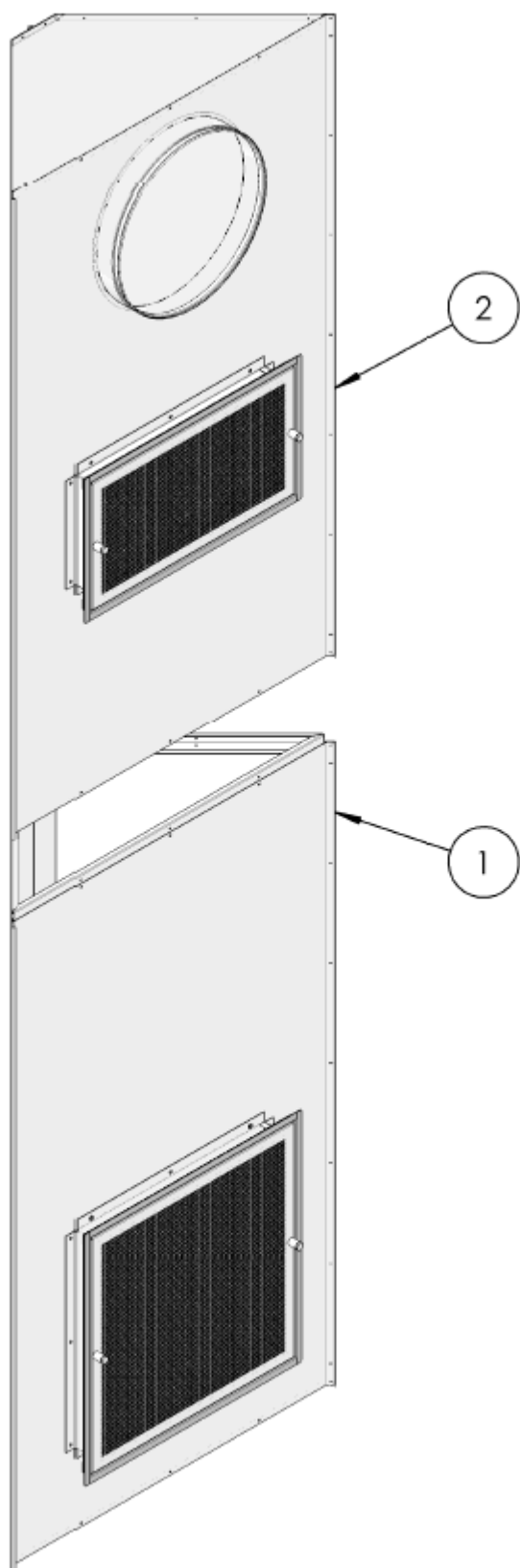


Fig.1. Metal mesh fluff separator

Installation

The vertical duct is delivered in two pieces (see image below, parts 1 and 2), which are assembled on site. The installation is typically performed by the ventilation contractor.

The units are placed in the corners (Halton Vita VSC/A), or near the corners (Halton Vita VSC/B), according to the design specification. The units are connected to the exhaust air ductwork situated above the false ceiling.



Note:
See the size for the required installation hole in the wall for grille from VSG product information/ Dimensions section.

Adjustment

The corner exhaust unit is self-balancing so that 1/3 of the exhaust air flows through the upper grill and 2/3 through the lower grill. Special configurations with different airflow distribution ratios are possible.

The total room exhaust airflow can be adjusted with the Halton PRA airflow control damper in order to ensure an even airflow between the exhaust units.

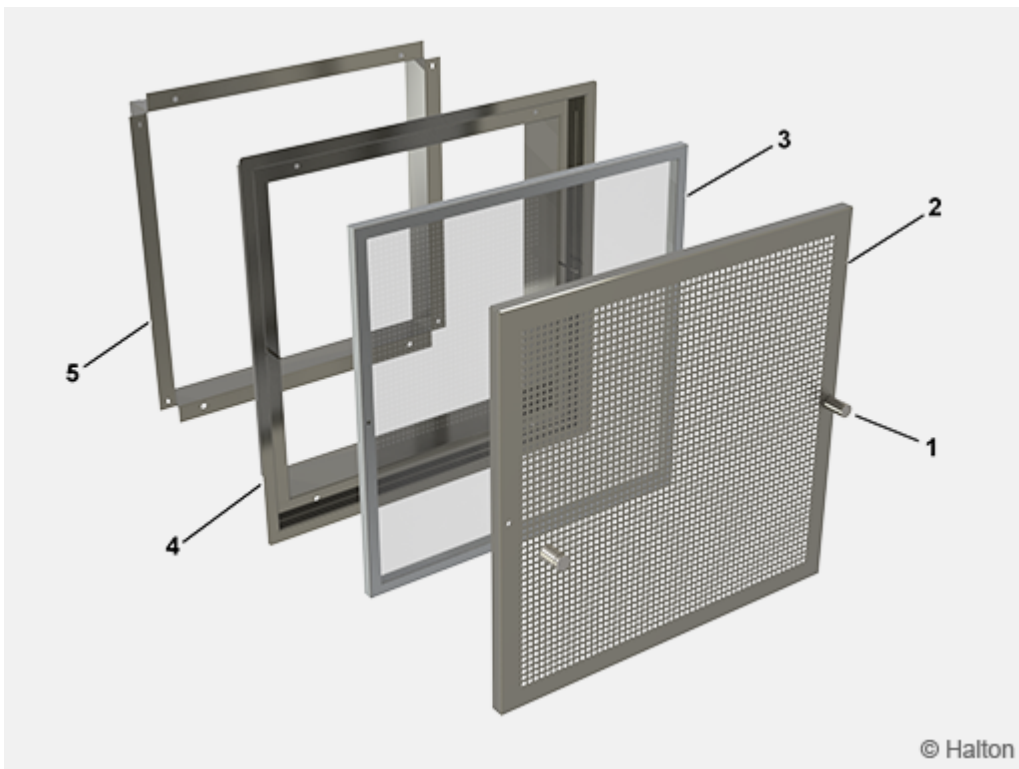
Servicing

Detach the perforated grille (2) by opening the screws (1). Wipe the grille with a damp cloth. Do not immerse in water.

The grille can also be sterilised in an autoclave ($t < 130^{\circ}$).

It is recommended to vacuum the metal mesh fluff separator (3) behind the grille regularly. It does not need to be removed for vacuuming.

Reassemble the grille and the screws.



Key:

1. Screw (2 pcs)
2. Exhaust grille
3. Metal mesh fluff separator
4. Frame for grille
5. L-shape fixing bracket

Order code

VSC/S-D-H-N, AF-CO-ZT

S = Model

- A Corner model
- B Wall model

D = Duct connection size [mm]

Circular:

315, 400, 500

Rectangular:

40×20 400×200

50×25 500×250

60×30 600×300

H = Height

3000,3100,3200...4300

N = Number of grilles

- 1 Grille only on the bottom
- 2 Grilles both on the top and bottom

Other options and accessories

AF = Air filter

- A Metal mesh fluff separator (stainless steel, AISI 316)
- N No filter

CO = Colour

- SA Antibacterial white (RAL 9003)
- N No painting

ZT = Tailored product

- N No
- Y Yes (ETO)

Code example

VSC/A-400-3000-2, AF=A, CO=A, ZT=N