

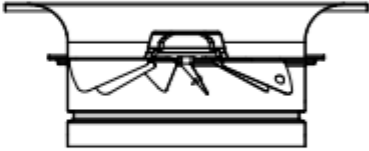
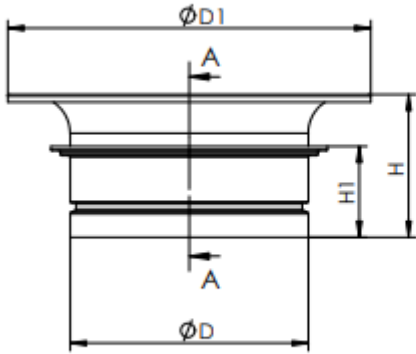
Halton TSA-C 旋流风口



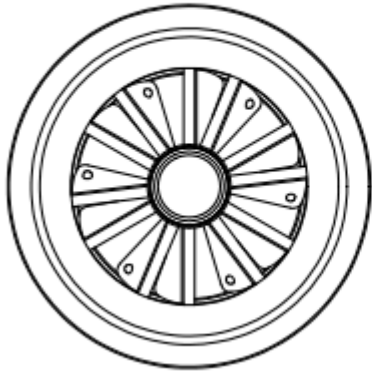
概览 Overview

- 水平径向或者垂直紧凑型旋流射流送风。
Horizontal radial / vertical compact swirl jet air supply.
- 调节叶片分布，适用于制热/制冷应用场合。
Suitable for heating and cooling applications by vans layout.
- 高效的旋流效果，高效混流并快速降低风速。
High effectiveness of swirl jet ensures efficient mixing and fast reduction of air velocity.
- 表面处理：粉末喷涂
Surface treatment: Power painting
- 可选附件:手动调节阀/电动调节机构
Optional accessories: manual adjustment damper/actuator

尺寸Dimensions and weight



剖面 A-A



规格Size	D	D1	H	H1	可选静压箱 Plenum option	静压箱进风口 Plenum inlet size
Φ 200	200	340	160	105	(D+50) x (D+50) x 300	Φ100
Φ 250	250	395	160	110	(D+50) x (D+50) x 300	Φ150
Φ 315	315	480	180	120	(D+50) x (D+50) x 300	Φ150
Φ 350	350	500	180	120	(D+50) x (D+50) x 300	Φ200
Φ 400	400	565	215	145	(D+50) x (D+50) x 300	Φ200
Φ 450	450	650	220	145	(D+50) x (D+50) x 300	Φ250
Φ 500	500	755	255	160	(D+50) x (D+50) x 300	Φ250

Φ 630	630	870	300	205	(D+50) x (D+50) x 330	Φ300
Φ 800	800	1075	315	195	(D+50) x (D+50) x 380	Φ350

安装Installation

旋流风口可直接与风管连接，或者与静压箱连接，取下前端盖可以调节叶片实现不同的运行模式。

Halton TSA is connected either directly to the duct by screwing or riveting or alternatively to Plenum.

Remove the front cover and through adjustment of vans to achieve different running modes.