

LVU – Floor Low Velocity Unit (CE)



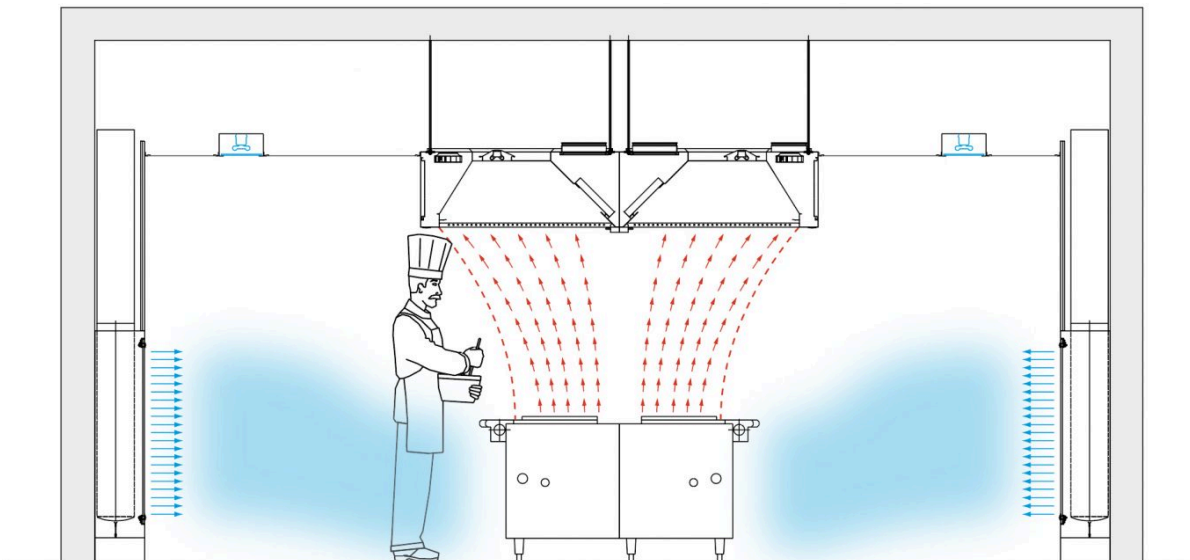
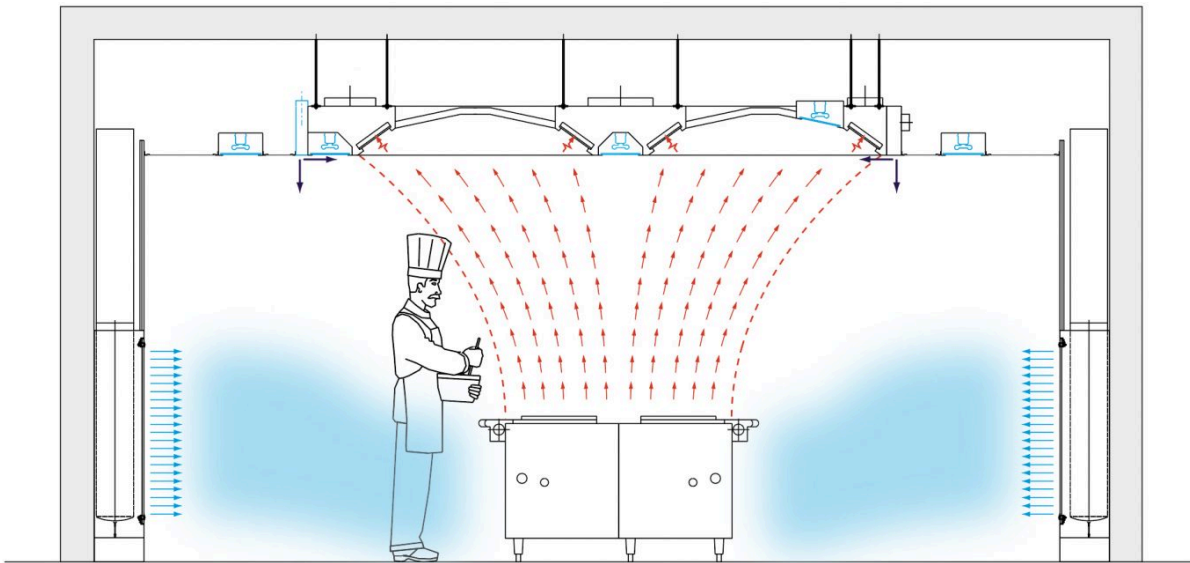
Overview

Uncontrolled draughts – even the smallest ones – can totally ruin the Capture & Containment capacity of hoods and ventilated ceilings. A well designed make up air strategy contributes not only to guarantee this efficiency but also to the final Indoor Air Quality (IAQ) inside the kitchen. It should always be considered as an inherent part of the kitchen ventilation solution.

Low Velocity Units LVU are designed to be installed and integrated in the occupied zone. This configuration guarantees the lowest draughts and highest comfort in the kitchen compared to “traditional” diffusers. They are designed to break the speed of the fresh air carried by the supply ductwork, distribute it equally inside the units and «laminarise» the flow. The fresh air is then diffused at a very low speed in a very homogeneous way and without draughts.

- Highest level of contribution in energy savings compared to traditional diffusers due to the best optimization of exhaust airflow rates reduction required by hoods and ventilated ceilings.
- Best Improvement of the Indoor Air Quality (IAQ) and the perceived temperature.
- Contributes directly to good working conditions and productivity improvement.
- Construction in stainless steel. Easy access to the inside of the units due to the front faces mounted on hinges.
- Internal system of airflow distribution made of a washable synthetic material, easy to remove and re-install.
- Wide range of units to match any integration requirements. Possibilities of customisation.
- Designed to facilitate easy cleaning.
- Special dimensions or finishes on request.

Principle of operation

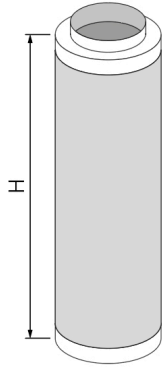
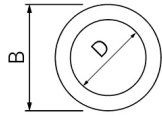


Dimensions

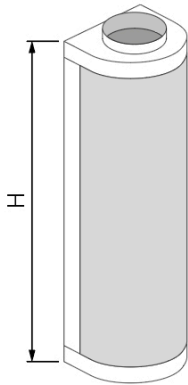
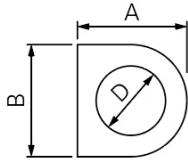
The static pressure loss varies between 40 to 80 Pa depending on the characteristics of the internal synthetic distribution sleeve.

(1) For air velocity of 0,20 and 0,40 m/s in the occupied zone.

LVU-C



LVU-B



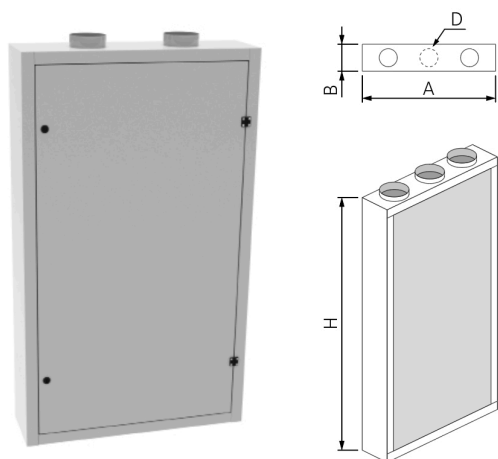
Size	H	[mm]			Qs [m³/h] [l/s] (1)			
		A	B	D	@ 0,20 m/s	@ 0,40 m/s		
1040	1000	400	350	250	410	114	810	225
1060	1000	600	550	315	620	172	1220	339
1080	1000	800	750	355	820	228	1620	450
1010	1000	1000	950	400	1020	283	2030	564
1240	1250	400	350	280	510	142	1010	281
1260	1250	600	550	355	770	214	1520	422
1280	1250	800	750	400	1020	283	2030	564
1210	1250	1000	950	450	1280	356	2540	706
1540	1500	400	350	300	620	172	1220	339
1560	1500	600	550	355	920	256	1830	508
1580	1500	800	750	450	1230	342	2440	678
1510	1500	1000	950	500	1530	425	3050	847
1740	1750	400	350	315	720	200	1420	394
1760	1750	600	550	400	1070	297	2130	592
1780	1750	800	750	450	1430	397	2850	792
1710	1750	1000	950	500	1790	497	3560	989
2040	2000	400	350	315	820	228	1620	450
2060	2000	600	550	400	1230	342	2440	678
2080	2000	800	750	500	1630	453	3250	903
2010	2000	1000	950	560	2040	567	4070	1131

LVU-Q



Size	H	[mm]		Qs [m³/h] [l/s] (1)			
		B	D	@ 0,20 m/s	@ 0,40 m/s		
1040	1000	400	200	410	114	670	186
1050	1000	500	250	510	142	1010	281
1060	1000	600	250	620	172	1060	294
1080	1000	800	300	820	228	1520	422
1240	1250	400	250	510	142	1010	281
1250	1250	500	250	640	178	1060	294
1260	1250	600	280	770	214	1330	369
1280	1250	800	355	1020	283	2030	564
1540	1500	400	250	620	172	1060	294
1550	1500	500	280	770	214	1330	369
1560	1500	600	315	920	256	1680	467
1580	1500	800	400	1230	342	2440	678
1740	1750	400	250	720	200	1060	294
1750	1750	500	315	900	250	1680	467
1760	1750	600	355	1070	297	2130	592
1780	1750	800	400	1430	397	2710	753
2040	2000	400	280	820	228	1330	369
2050	2000	500	315	1020	283	1680	467
2060	2000	600	355	1230	342	2130	592
2080	2000	800	400	1630	453	2710	753

LVU-E



Size	Dimensions [mm]				Airflow rate [m³/h] [l/s] (1)			
	H	A	B	D	@ 0,20 m/s	@ 0,40 m/s	@ 0,40 m/s	@ 0,40 m/s
1040	1000	400	300	1 x 200	260	72	510	142
1060	1000	600	300	2 x 200	390	108	770	214
1080	1000	800	300	3 x 200	520	144	1030	286
1010	1000	1000	300	3 x 200	650	181	1290	358
1240	1250	400	300	1 x 200	330	92	640	178
1260	1250	600	300	2 x 200	490	136	970	269
1280	1250	800	300	3 x 200	650	181	1290	358
1210	1250	1000	300	3 x 200	810	225	1620	450
1540	1500	400	300	1 x 200	390	108	670	186
1560	1500	600	300	2 x 200	590	164	1160	322
1580	1500	800	300	3 x 200	780	217	1550	431
1510	1500	1000	300	3 x 200	980	272	1940	539
1740	1750	400	300	1 x 200	460	128	670	186
1760	1750	600	300	2 x 200	690	192	1350	375
1780	1750	800	300	3 x 200	910	253	1810	503
1710	1750	1000	300	3 x 200	1140	317	2030	564
2040	2000	400	300	1 x 200	520	144	670	186
2060	2000	600	300	2 x 200	780	217	1350	375
2080	2000	800	300	3 x 200	1040	289	2030	564
2010	2000	1000	300	3 x 200	1300	361	2030	564