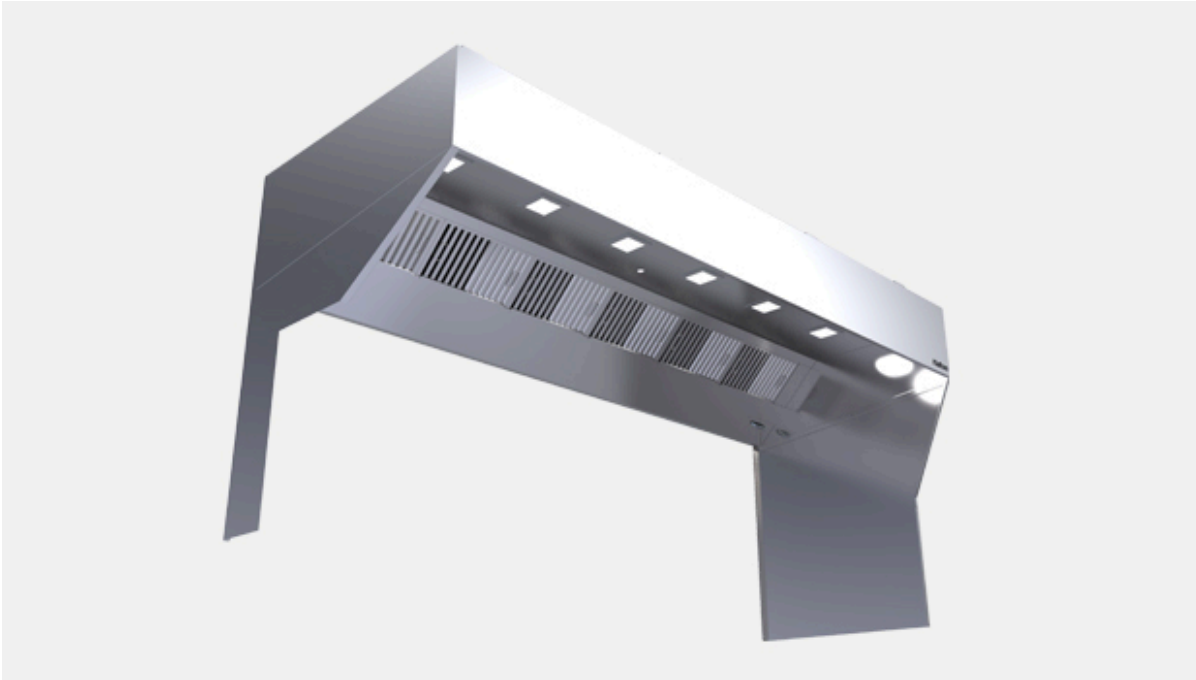


KVM-A – Capture Jet™ hybrid backshelf hood (ETL)



Overview

- Improved indoor air quality with reduced energy use. Halton Capture Jet™ reduces the exhaust airflow rates required and improves the capture and containment efficiency of the hood.
- High efficiency grease filtration using UL and NSF classified Halton KSA multi-cyclone filters with a particulate extraction efficiency of 92% on particles with a diameter of 8 microns per ASTM F2519.
- T.A.B.™ (testing and balancing) ports, which allow accurate and effective commissioning.
- Horizontal front overhang is 0" with a minimum depth of 42" (1067mm)
- Halton HCL Culinary Lights provide the best visual comfort while contributing to improved safety and energy savings.
- Optional LED lights and LED dimming is available for Capture Jet hoods. Dimming is control by a knob on the switch panel or through Halton HMI Touch Screen.
- Stainless steel, welded design.

RECOMMENDED COMBINATIONS

The technologies and features integrated into the KVM hood can be combined with the following technologies or products to further improve the Energy Efficiency, Safety, Indoor Environment Quality (IEQ), or Emission Control levels.



Further increase the energy savings and improve the working conditions of the staff

Go for [M.A.R.V.E.L.](#) energy saving technology for kitchens ventilation



Establish your kitchen wherever you chose and increase once more the energy savings

Go for [PolluStop](#) pollution control unit.



Get peace of mind by making no compromise on fire safety

Go for the factory pre-installed FSS [Fire Suppression System](#)



Optimize the ductwork cleaning costs and further improve your safety

Go for KGS [grease deposition level monitoring system](#) for ductwork

Specification

Kitchen hood inner liner shall be constructed from 18 gauge stainless steel where exposed. The kitchen hoods shall be supplied complete with outer casing /main body, inner liner, exhaust duct, pressure measurement T.A.B. ports, Outer casing panels shall be constructed of stainless steel with a brushed satin finish. Each joint shall be welded and liquid tight, avoiding harmful dripping of condensation.

All exposed welds are ground and polished to the original finish of metal. Canopy ends shall be double sided wall construction (no single wall hoods permitted).

Options

- Switch Panel
- Rear Seal
- Fire Protection
- Backsplash
- LED Lighting and LED Dimmable Lighting
- Ceiling Closure Panels
- Capture Jet Intake Location (Top)
- Powder Coating in a Variety of Colors
- Automated Balancing Damper option with M.A.R.V.E.L. II demand controls
- Custom/Design Stainless Steel Exterior Textures and Finishes
- M.A.R.V.E.L. Demand Control w/ VFD by Halton