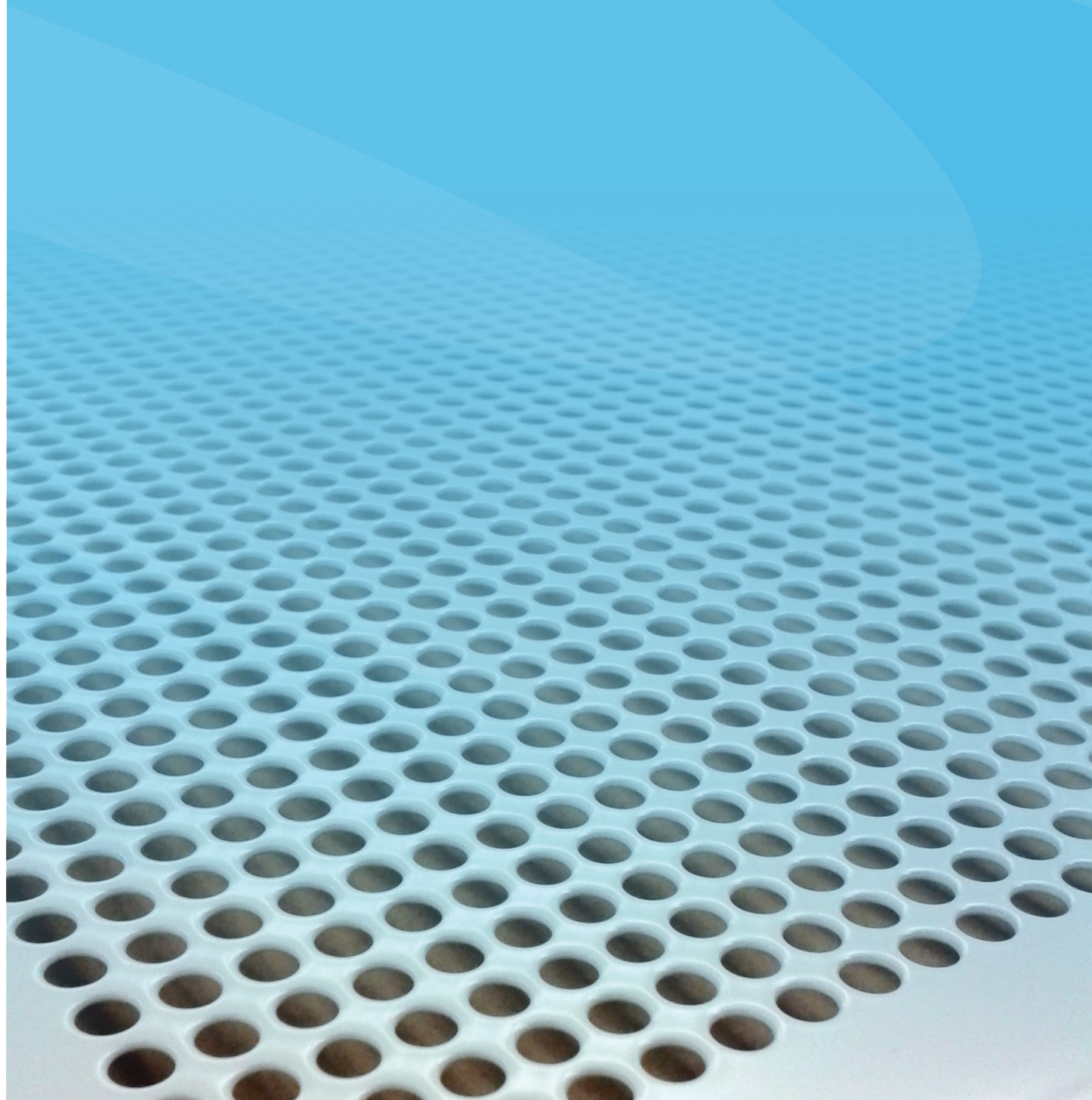


Halton Revit Plugin

Installation Instructions and User Guide





Content

About this document	3
Required software versions	4
Required Revit version	4
Optional MagiCAD version	4
Halton Revit plugin installation	4
Starting the Revit after plugin installation	5
Inserting Halton products from Product Storage	6
Exporting Halton products from Halton HIT Design to the Revit	8
Example: Air Diffuser	9
Example: Chilled Beam	13

About this document

The purpose of Halton Revit plugin is to add Halton product to Revit or MagiCAD for Revit via Product Storage or using Halton HIT design program to export products and with add from HIT tool insert products to Revit.

With Halton Revit Plugin product storage, you may easily insert products to the project inside the Revit Program.

Revit plugin Add from HIT, calls Halton HIT Design software where user first may select the product, calculate the device and after that can be transfer device geometry, technical data and calculation results into Revit.

Required software versions

Required Revit version

Revit

- 2024, 2023, 2022, 2021

Optional MagiCAD version

MagiCAD (optional)

- MagiCAD for Revit 2023 (with Revit 2021, 2022, 2023, 2024)
- MagiCAD for Revit 2024 (with Revit 2021, 2022, 2023, 2024)

Halton Revit Plugin installation

1. Ensure that you have required Revit version installed on your computer
2. Install Halton Revit plugin. Installation packages can be downloaded from <https://portal.magicad.com/download/ProductSearch?searchStr=Halton&categoryId=3>

The 64-bit version of the program is installed by running the installation program

Halton plugin 2023.6.1 for Revit 2021-2024 and MagiCAD.msi

Administrator privileges are recommended for installation.

Starting the Revit after plugin installation

After running the installation, Halton panel appears in Revit Add-Ins –ribbon tab and user can insert Halton products from *Product Storage* or export Halton product from Halton HIT Design and product can be insert to the Revit by using *add from HIT* function.

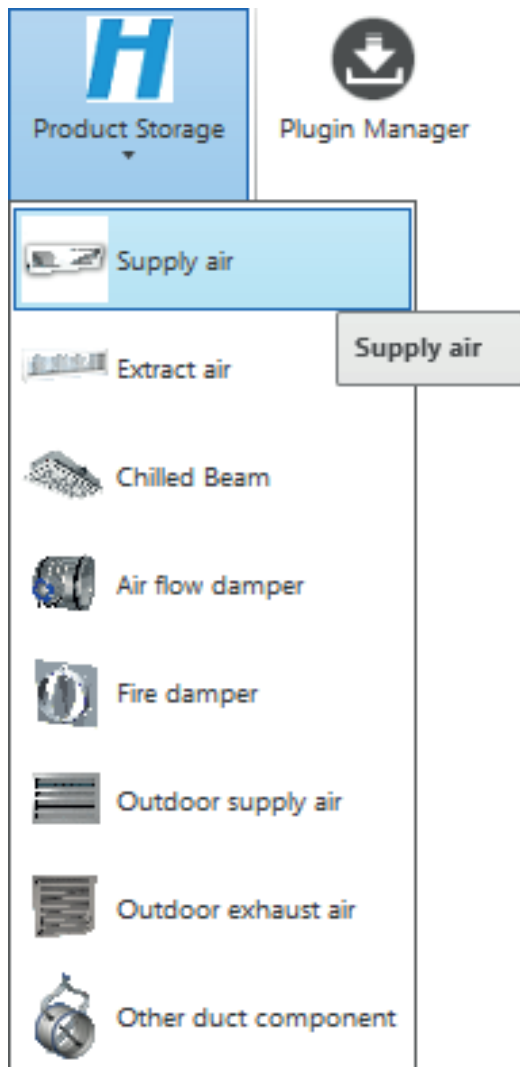


Inserting Halton products from Product Storage in Revit

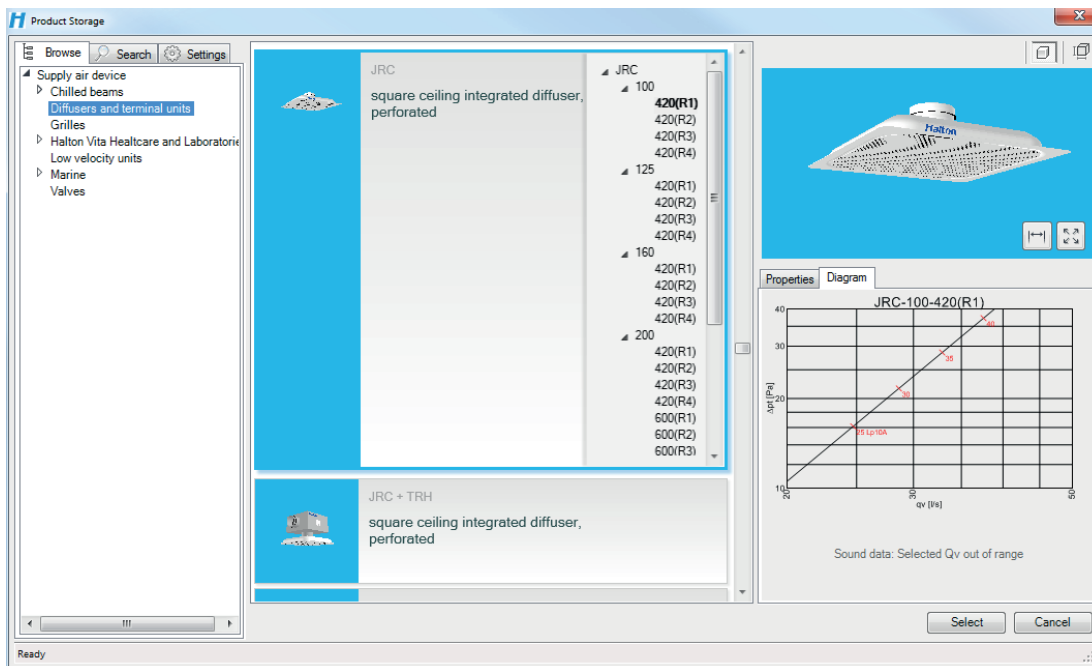
In order to add Halton product, click Revit Add-Ins –ribbon tab and Product Storage –button in Halton panel.



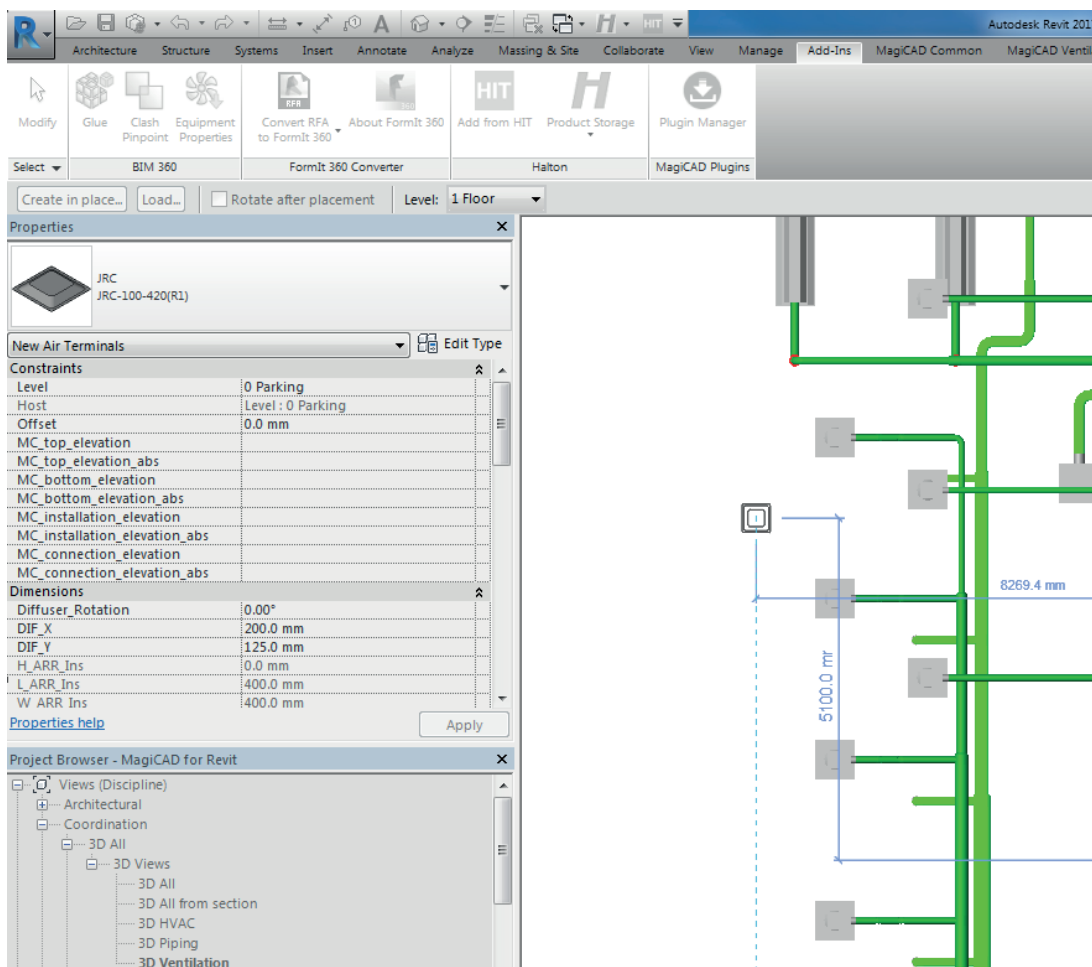
1. Select from 'Product Storage' one of the product group



2. With Product browser you may easily check different products dimensions and view the products technical data. Click Select when desired device is found



3. Insert device to Revit.



Exporting Halton products from Halton HIT Design to the Revit

1. Download and install Halton HIT Design-program and open it.

Link for download:

https://www.halton.com/en_GB/halton/products/halton-hit-design-tool

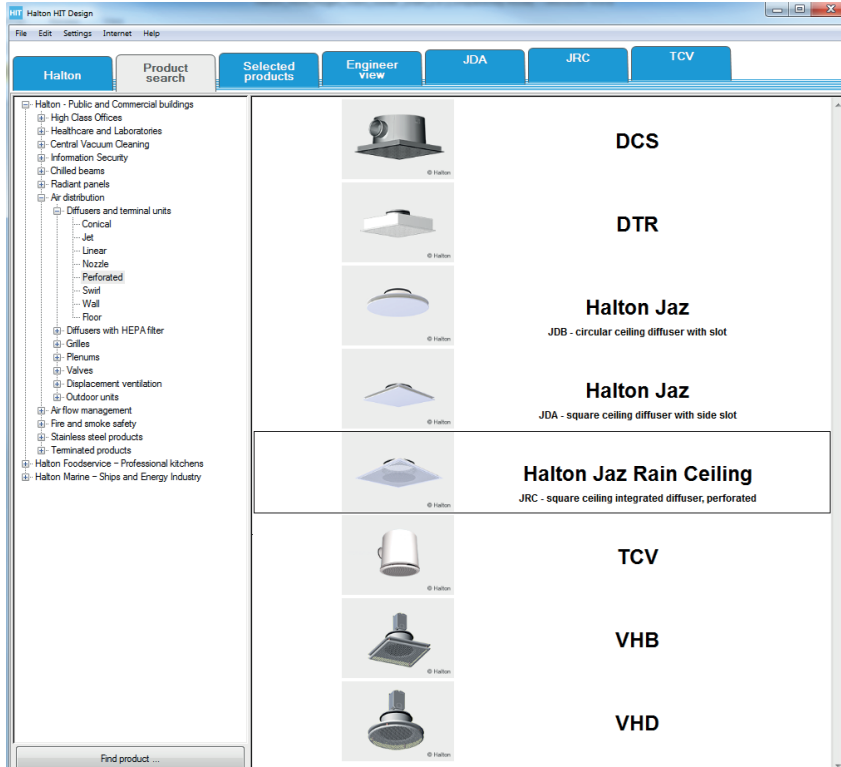
The screenshot shows the Halton HIT Design Tool website page. The navigation bar includes categories: BUILDINGS, HEALTH, FOODSERVICE, MARINE, and ABOUT US. Below this, there are sub-categories: SCIENCE & INNOVATIONS, SEGMENTS, PRODUCTS, SERVICES, REFERENCES, and DOWNLOADS. The main heading is "HALTON HIT DESIGN TOOL" with social media icons for Facebook, Twitter, and LinkedIn. A date "04/12/2017" is displayed. The main content area features a text block: "Halton's easy but sophisticated product selection and space design software enables you to create comfortable, energy efficient and safe indoor environments." To the right is a large blue logo with the text "Halton HIT DESIGN". Below the text block, there is a section titled "Halton HIT Design Tool" with a description: "With Halton HIT Design tool you can quickly select the products you need, simulate their performance for factors such as air velocity, cooling/heating capacity, throw pattern and sound level, to perfectly match to the space of your choice." A link "Download Halton HIT Design Software here" is provided. At the bottom, a breadcrumb trail reads: "HALTON.COM > BUILDINGS > DOWNLOADS > HALTON HIT DESIGN TOOL".

2. Open Halton HIT Design

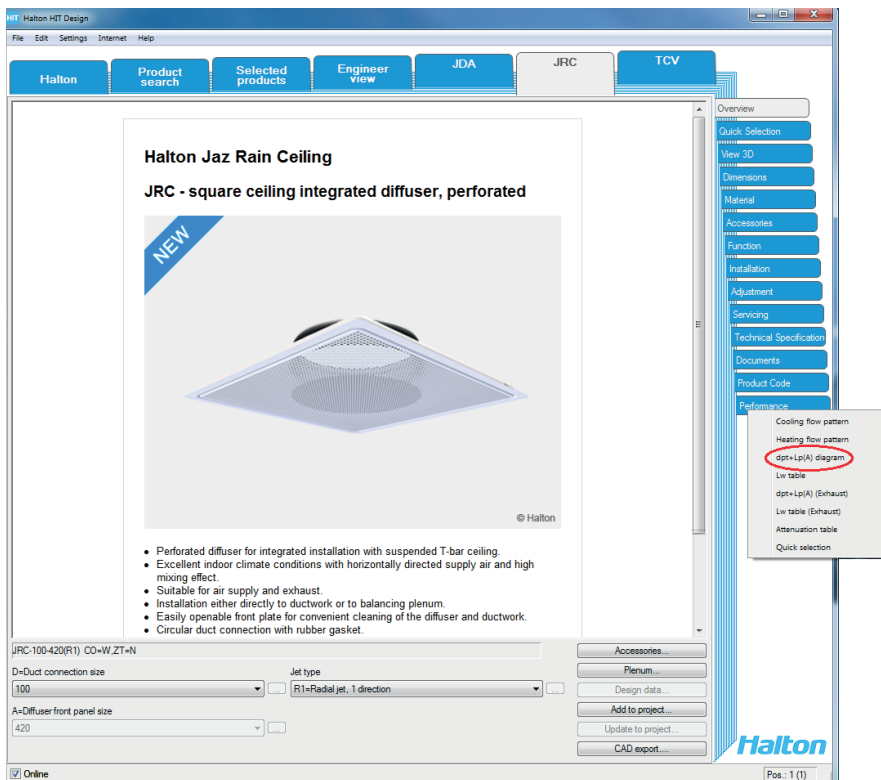
The screenshot shows the Halton HIT Design software interface. The window title is "Halton HIT Design". The menu bar includes "File", "Edit", "Settings", "Internet", and "Help". The main interface has a top navigation bar with tabs: "Halton", "Product search", "Selected products", and "Engineer view". The central workspace displays the "Halton HIT DESIGN" logo. On the right side, there is a sidebar menu with options: "Halton HIT", "About Halton HIT", "Halton in Brief", "Simulation Services", and "Local Halton". At the bottom left of the workspace, the text "(c) 1997-2018 Halton All rights reserved" is visible.

Example: Air diffuser

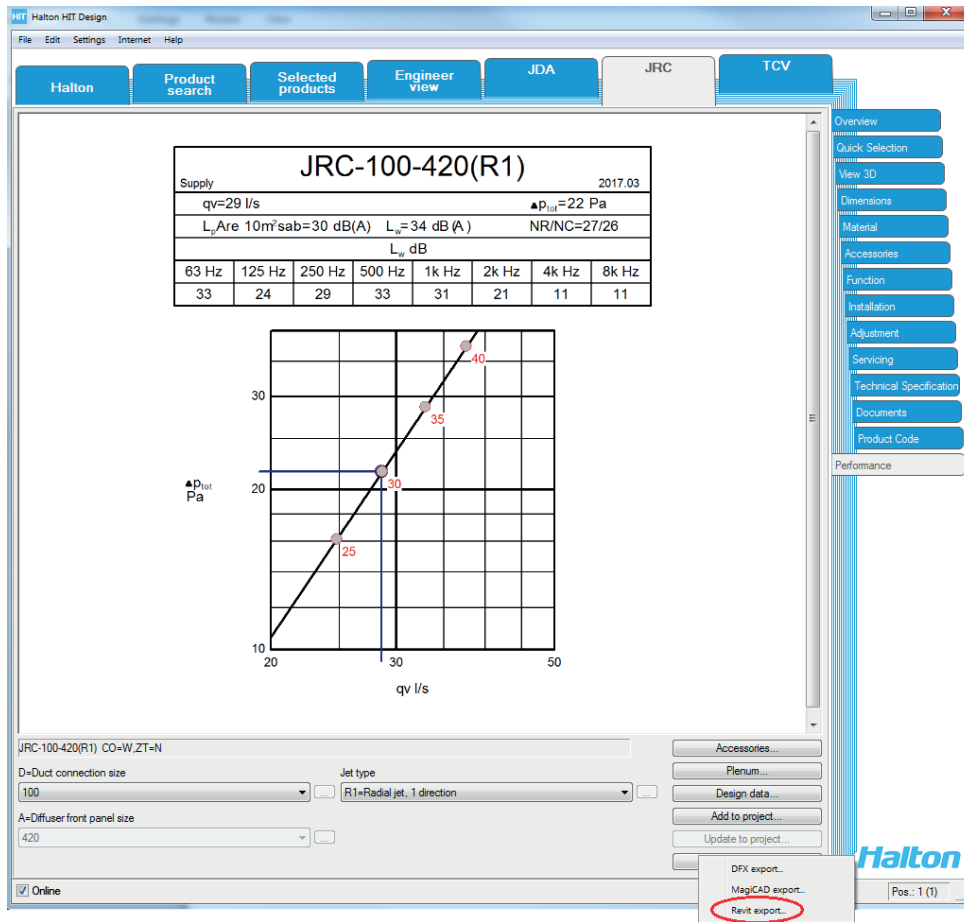
1. Select product in Halton HIT Design



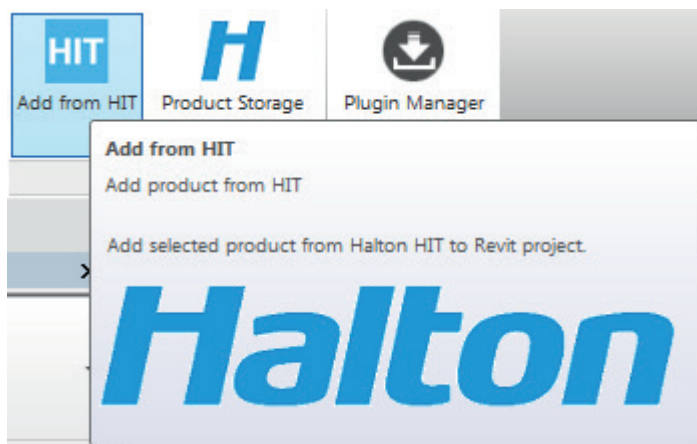
2. Product must be modelled before you may export it. Select in right hand side "Performance"-tab, and select 'dpt+Lp (A)' diagram



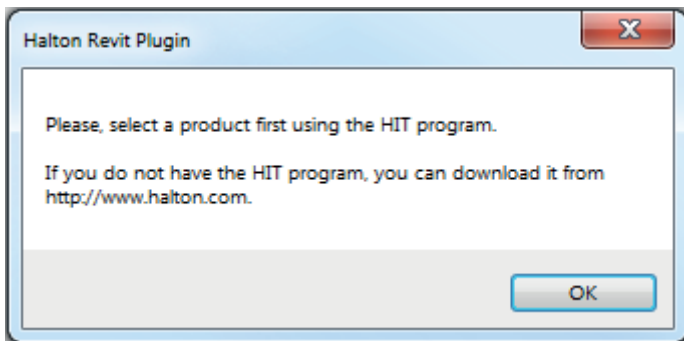
3. After modeling is ready click then 'CAD export...' -button and select 'Revit export'...



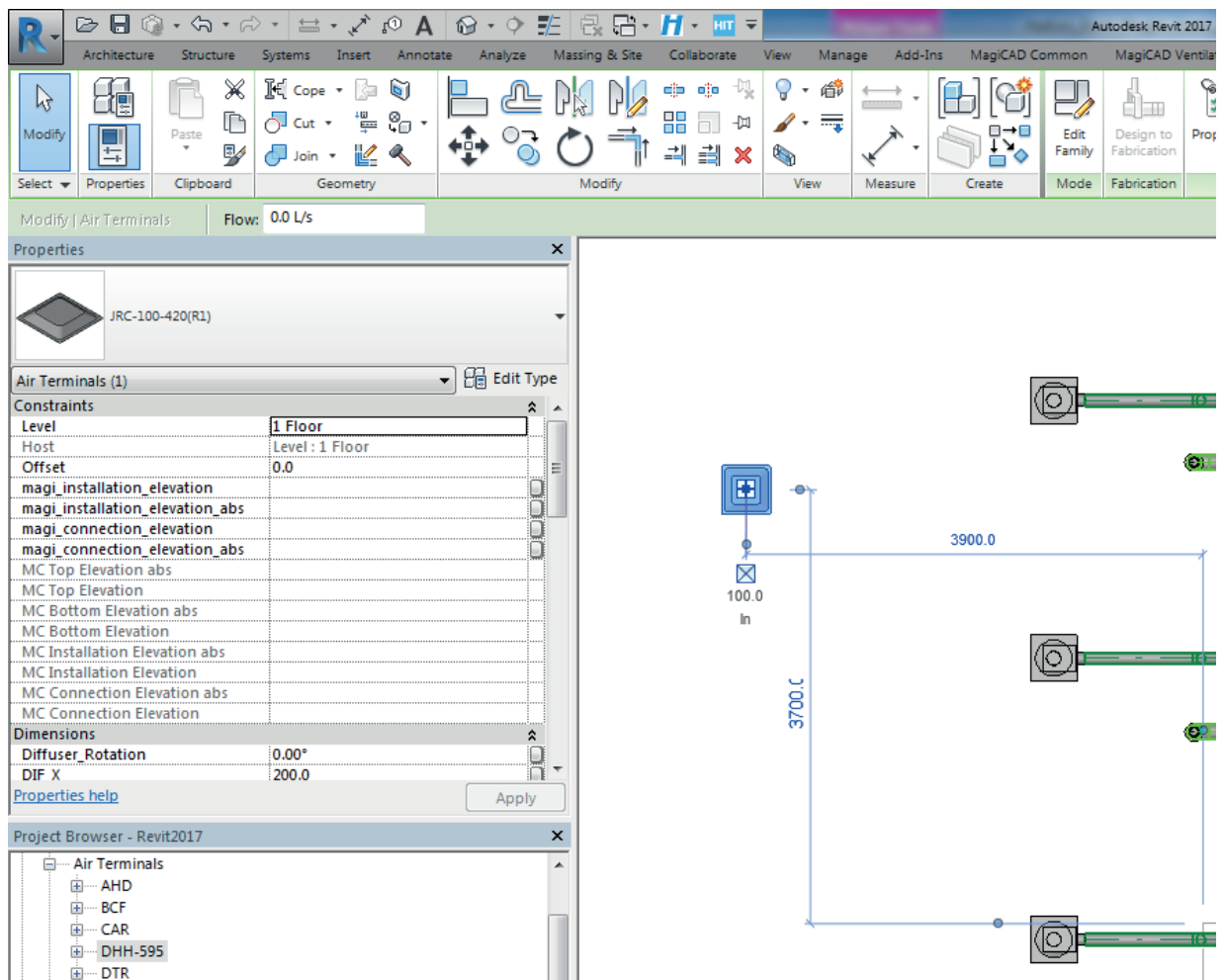
4. Actions in the Revit, after HIT Revit export: Open 'Adds-Ins' ribbon and click 'Add from HIT' image



5. If product export failed from Halton HIT Design-program, you will get this message when you click Add from HIT image



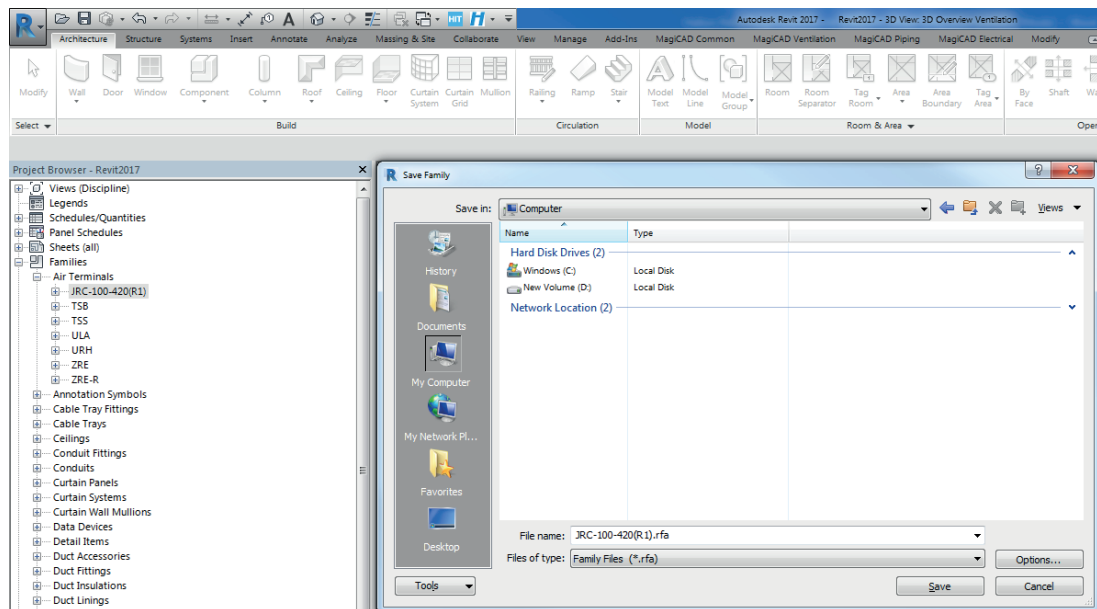
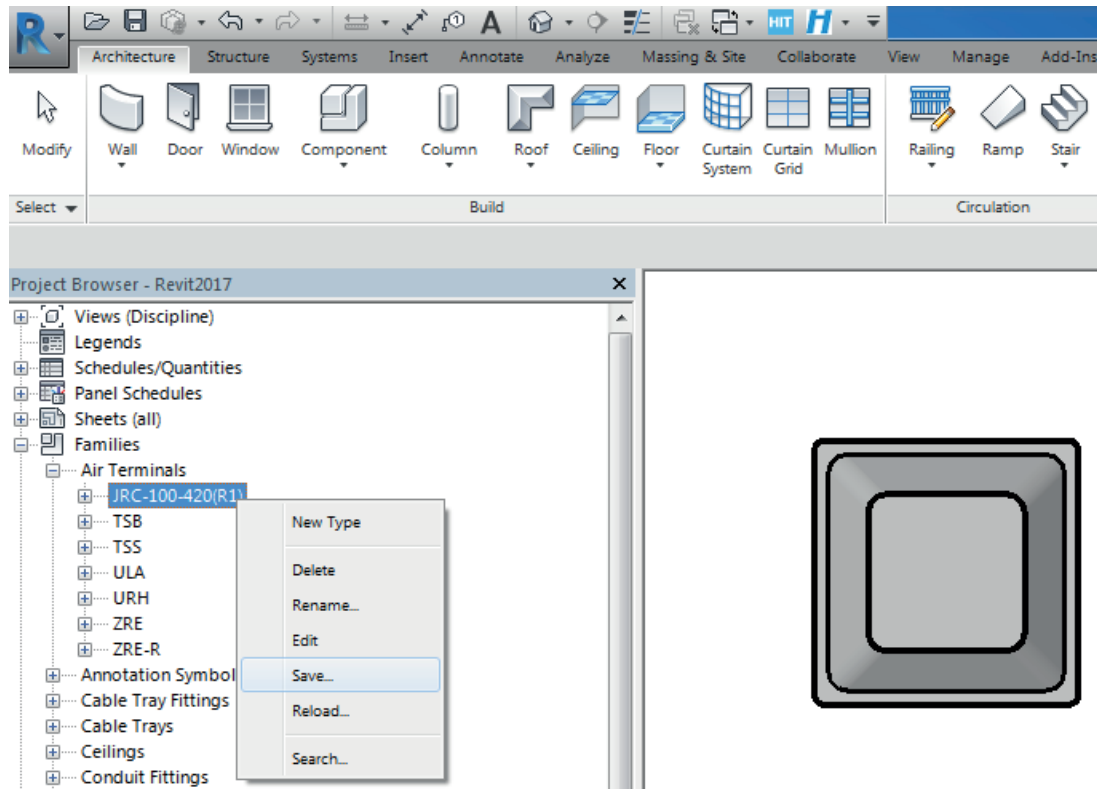
6. Click 'Add from HIT' -> the product will be downloaded to Revit



7. Saving RFA from Revit to computer disc:

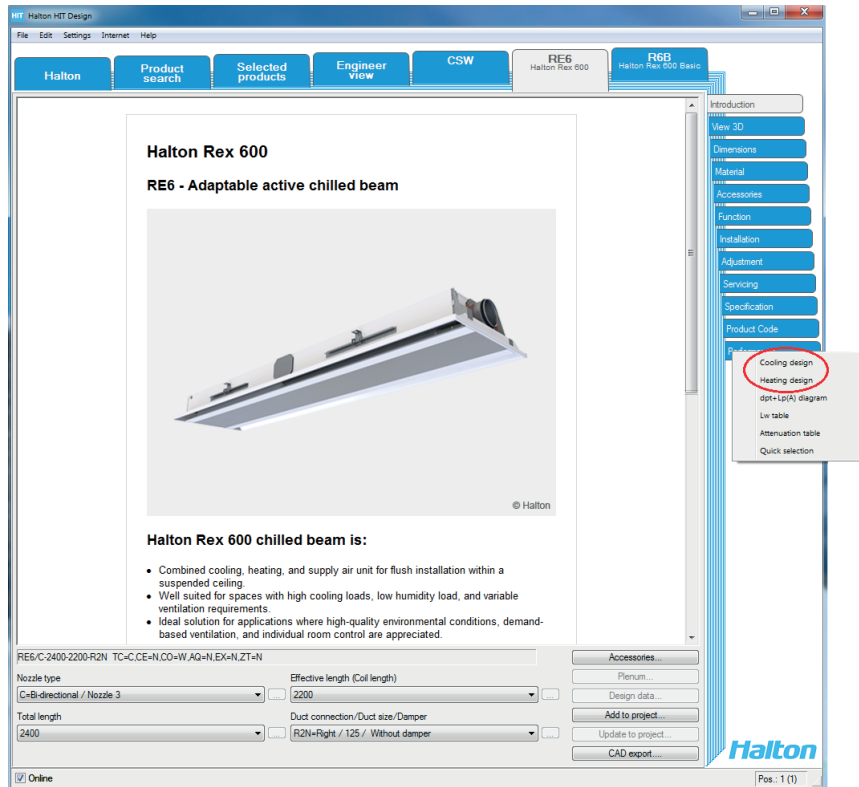
Choose product from 'Project browser'/'Families' -> e.g.. Product group 'Mechanical Equipment'

-> activate product name -> click right button (mouse) -> choose 'Save' -> select the location of saving from your computer

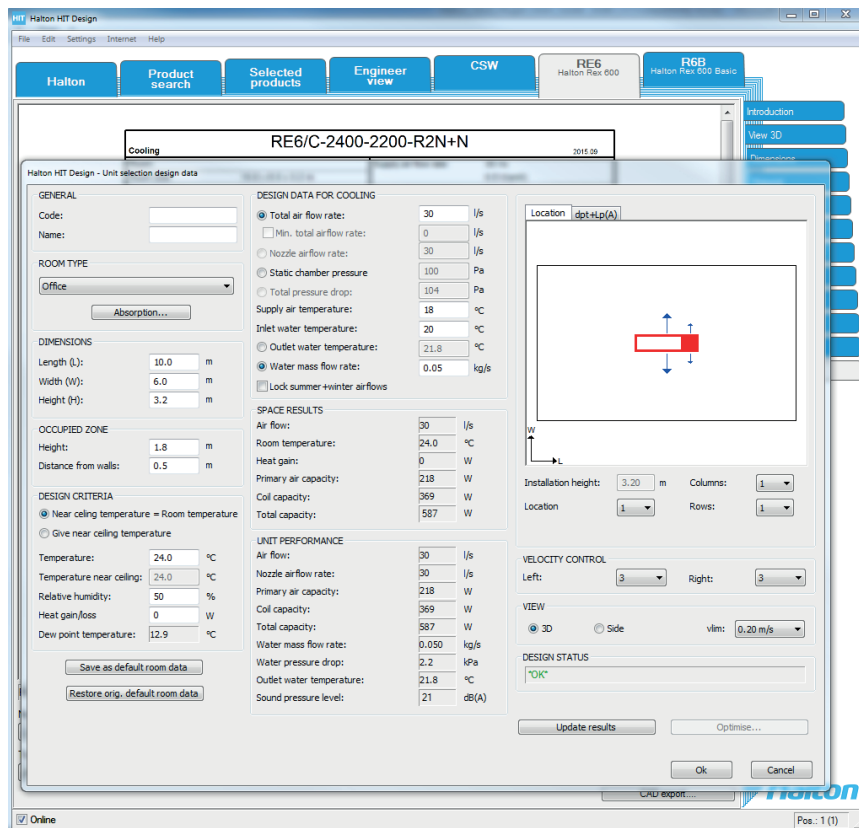


Example: Chilled Beam

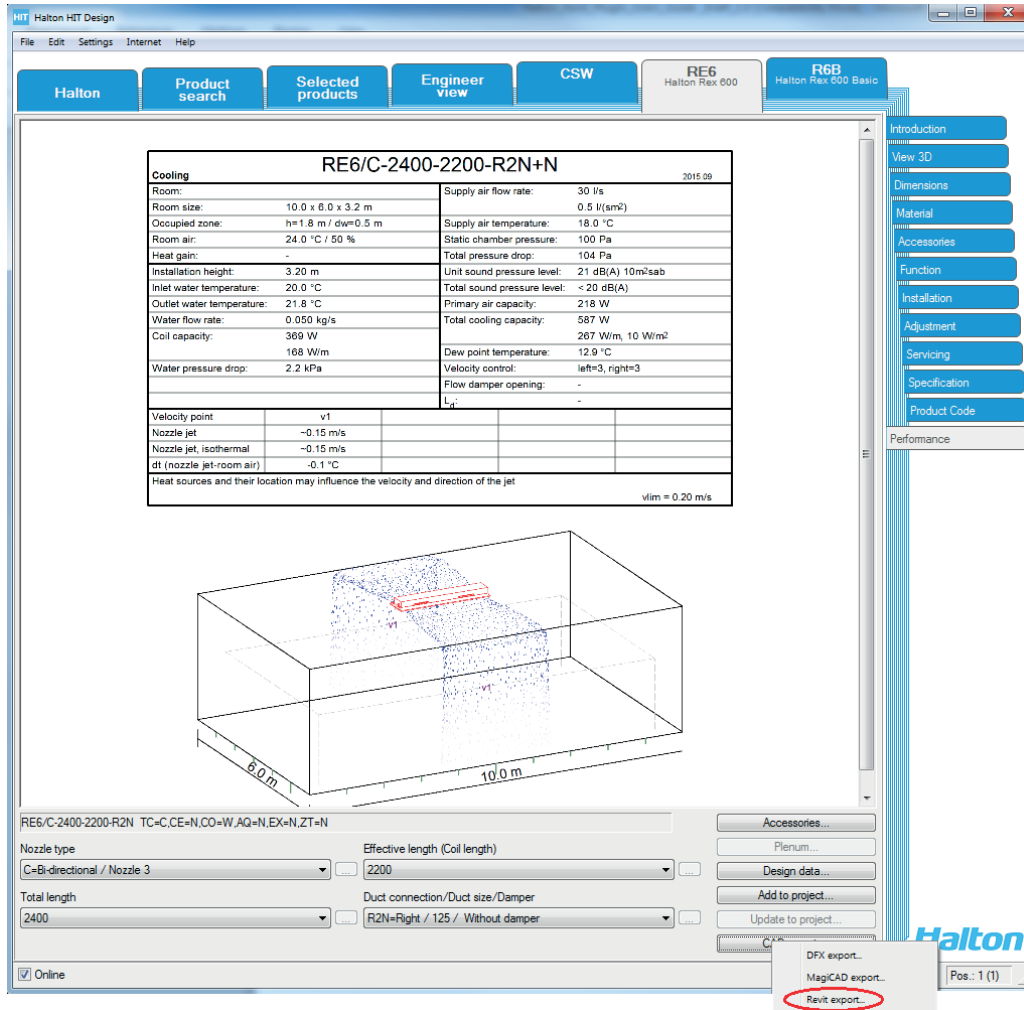
1. Select production in Halton HIT Design and set the Performance data (Cooling or Heating).



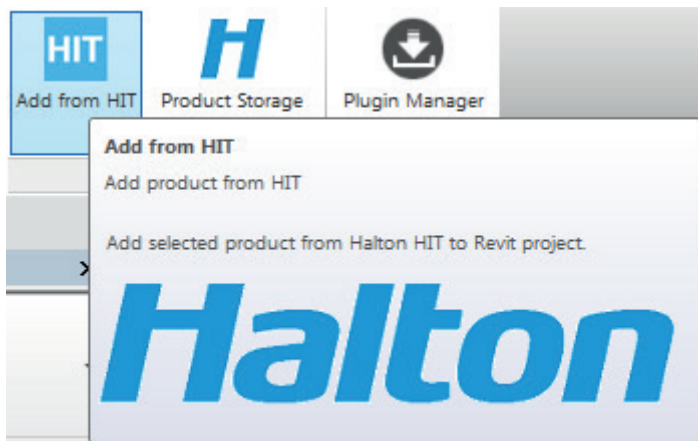
2. Modelling of the chilled beam is ready. HIT performance design status "OK"



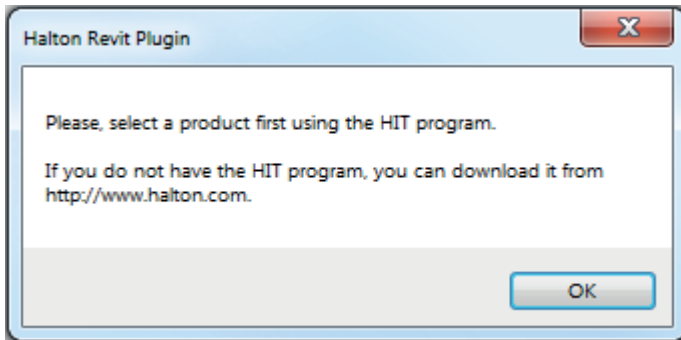
3. The modelling of the chilled beam is accepted by Halton HIT and ready to be exported to Revit



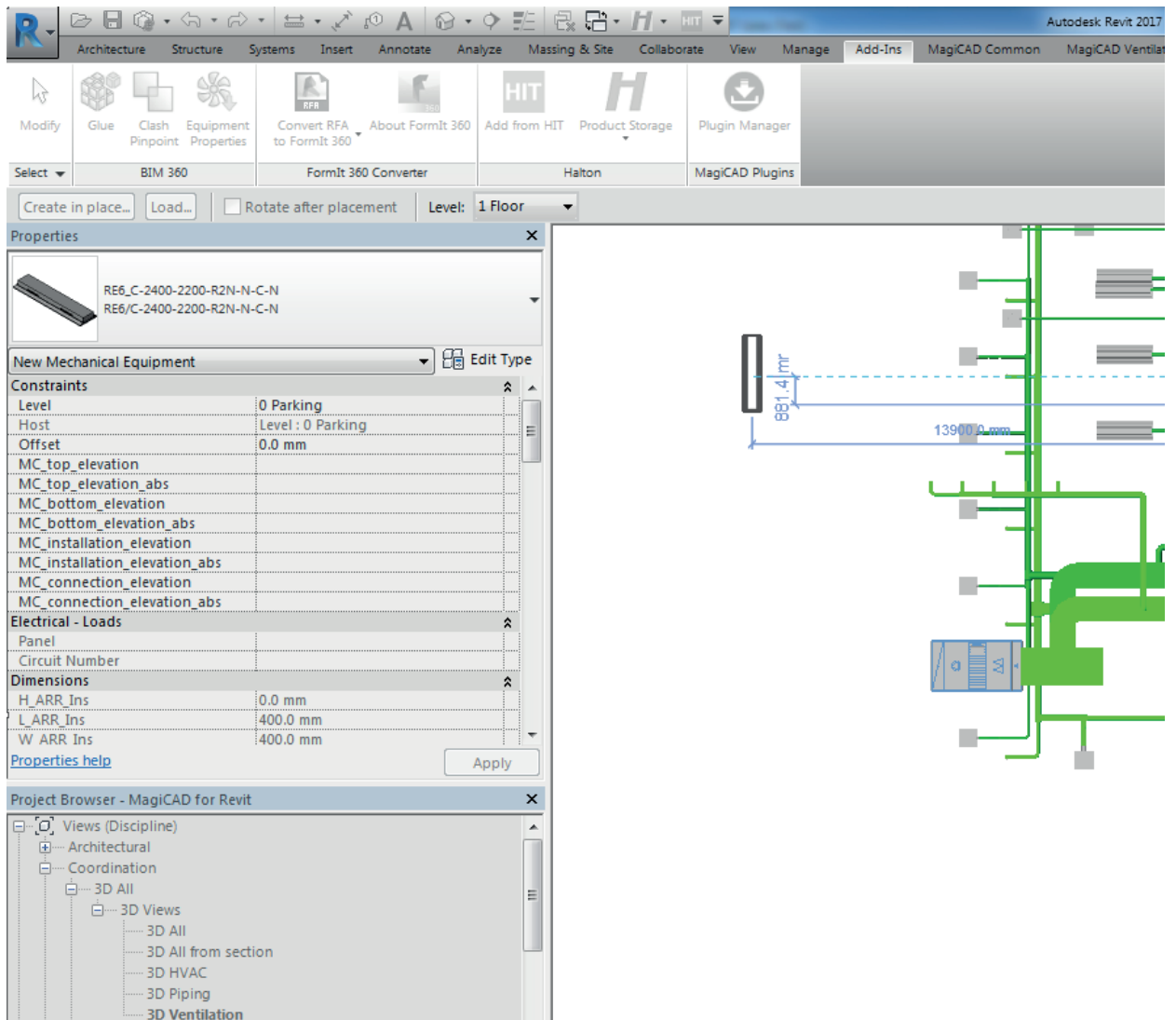
4. Actions in the Revit, after HIT Revit export: Open 'Adds-Ins' ribbon and click 'Add from HIT' image



5. If product export failed from Halton HIT Design-program, you will get this message when you click Add from HIT image



6. Click 'Add from HIT' -> the product will be downloaded to Revit



7. Saving RFA from Revit to computer disc:

Choose product from 'Project browser' / 'Families' -> e.g.. Product group 'Mechanical Equipment'

-> activate product name -> click right button (mouse) -> choose 'Save' -> select the location of saving from your computer

